



KENYA ANIMAL GENETIC RESOURCES CENTRE

For Superior Kenyan Animal Genetics



REPUBLIC OF KENYA



Dtrs of Mariru Emory Kaburu FR.364

BULL CATALOGUE

January 2023 to December 2024



Daughter of a KAGRC Jersey sire



Daughter of KAGRC sire at ADC farm



ISO 9001:2015 QMS Certified

WI - 5 - 5- 1



KENYA ANIMAL GENETIC RESOURCES CENTRE

For Superior Kenyan Animal Genetics

VISION

“ A world class producer of superior animal genetic resources ”

MISSION

“ To produce, distribute and conserve high quality animal germplasm as well as provide related services through cutting-edge technology to contribute to optimal national livestock productivity for socioeconomic development ”

MANDATE

The Centre derives its mandate from Legal Notice No. 110 of 5th September 2011 that provides for:-

- i. Establishment of a national livestock resources gene bank for conservation of livestock tissues, DNA, semen and embryos of all livestock and emerging livestock species for posterity;
- ii. Conservation for posterity and avail livestock tissues, DNA, semen and embryos of all livestock and emerging livestock species in Kenya for both research and breeding;
- iii. Engagement in strategic semen production;
- iv. Serve as a reference laboratory for certification, testing of semen, embryos and related livestock production materials for purpose of use and export;
- v. Either alone or in collaboration with other institutions, develop and produce chemicals and laboratory products for use in the production of semen;
- vi. Either alone or in collaboration with other institutions, provide information on the suitability and effectiveness of animal breeding products; and
- vii. Provide training in animal resource conservation procedures, semen, in-vitro embryo production and transfer and related technology transfer.

Esteemed customers, breeders, Farmers and all stakeholders. Once again, I am delighted to present to you the 11th Edition of the KAGRC Bull Catalogue, 2023-2024. Artificial Insemination plays a key role in improvement of livestock productivity, and contributes significantly to food and nutrition security.

This edition has been produced with a lot more information on sires and dams of all KAGRC bulls that are in production and we hope it will assist the farmer/breeders make informed breeding decisions. The KAGRC bulls are adapted to our environment and competes favourably with all other sires in the market.

Farmers are encouraged to make extensive use of this document while selecting suitable sires for their breeding requirements. The information therein will also be useful in identifying related sires to avoid inbreeding. With this tool, many gains will be achieved for increased productivity.

KAGRC bulls are recruited by the Centre's Genetic Advisory Committee, that is composed of breed experts and Geneticists through careful selection of registered and officially milk recorded contract mating dams with superior production and conformation traits.

The committee recruits the young bulls to the station at the age of one month. The sires of these bull calves are carefully selected from the best proven sires with outstanding



Dr. David K. Kios, HSC
Managing Director

balance in production, fertility, health traits and longevity.

We thank all those whose efforts and expertise has seen a high quality informative catalogue developed. It is gratifying to note the watchful eyes of the Genetic Advisory Committee, breeders and other Stakeholders through whom the livestock farmers have come to consume the valuable information in the bull catalogue for their breeding needs.

Dr. David K. Kios, PhD, HSC
KAGRC Managing Director.

TABLE OF CONTENTS

The Managing Director's Message	1	Sahiwal Sires	47
Linear Composite Indexes	2	Boran Sires	49
Body parts of a cow	3	Composite Breed	50
Explanation of terms	4	Young sires in waiting	51
Holstein Friesian Sires	5	Other beef sires with semen in stock	52
Ayshire Sires	25	Agents that stock KAGRC products	52
Guernsey Sires	41	County governments that stock	
Jersey Sires	44	KAGRC products	56

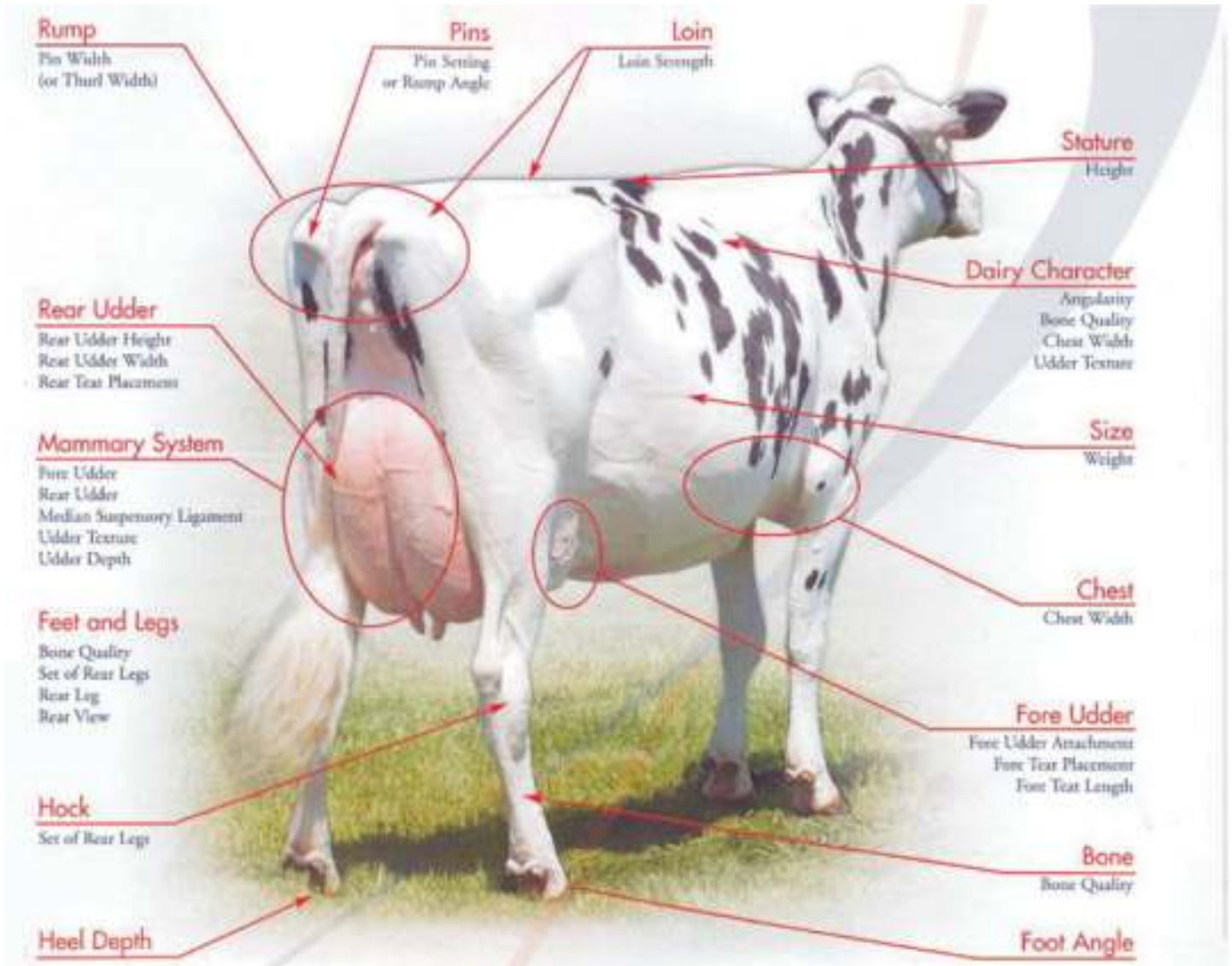
LINEAR COMPOSITE INDEXES

Linear composite indexes combine linear trait information on several related traits into one numerical value. This composite index can be used as a selection tool in breeding programs to identify those bulls which are predicted to transmit a desirable combination of the traits in the composite index. The traits included in each composite index are:

1. **UDDER COMPOSITE INDEX;** Fore Udder Attachment, Udder Depth, Rear Udder Height Udder Cleft, Rear Udder Width, Front Teat Placement
2. **BODY SIZE COMPOSITE INDEX;** Stature, Body Depth, Strength, Thurl Width
3. **FEET AND LEG COMPOSITE INDEX;** Rear Legs – Side View
4. **DAIRY CAPACITY COMPOSITE INDEX;** Dairy Form, Strength

1. **TPI** - Total Performance Index. A multi trait index that combines production, type, health and fertility into a single value. The higher the better.
2. **GTPI** - Genomic Total Performance Index.
3. **LPI** - A multi-trait single index of the overall genetic merit of a sire based on the Production, Conformation and Auxiliary traits known to affect longevity, durability and profitability.
4. **EBV** - Estimated Breeding Values. Production proofs are expressed as estimated Breeding values which are expressed in mature equivalent kilograms for milk, Fat, Protein yields and fat and protein percentage.
5. **PTAT** - Predicted Transmitting Ability Final Score for all types. An estimate of the genetic superiority for confirmation that bull will transmit to its offspring. The higher the better.
6. **PTAM** - Predicted Transmitting Ability for Milk. The average genetic value of milk that the sire will transmit to the date above breed average.
7. **PTP** - Predicted Transmitting Ability for Protein.
8. **PTAF** - Predicted Transmitting Ability for Fat.
9. **UDC** - Udder Composite. An index based on ability for udder improvement. The higher the better.
10. **FLC** - Feet and Legs Composite. Measure of bull's ability for foot and leg improvement. The higher the better.
11. **SCS** - Somatic Cell Score. Provides an indicator of mastitis in a bull's daughters based on direct measure of somatic cells in milk. It ranges from 2.5 - 3.5. The lower the better.
12. **SCE** - Sire Calving Ease. Measures the tendency of calves of a certain sire to be born more or less easily. The lower the value the better.
13. **PL** - Productive Life. Measure of confidence in the PTA values. Measure of amount of time a daughter of a certain sire stays in the herd as a productive animal in addition to its lifetime.
14. **REL** - Reliability, Measure of confidence in the PTA values. Measure of amount of information in a trait. Expressed as a percentages and ranges from 1-99. The closer it is to 99 the better.
15. **DPR** - Daughter Pregnancy Rate. Measure of fertility. Indicator of how quickly daughters of a certain sire comes back into heat after calving.

BODY PARTS OF A COW



ABBREVIATIONS USED IN CATALOGUE

ADC	Agricultural Development Corporation	PED	Pedigree
V/av.	Average	Prod.	Production
B.V.E	Breeding Value Estimate	Prot.	Protein
B/F/bf	Butterfat	RF	Red Factor
B.I	Breeding Index	DTRS/dtr	Daughters
C. Score	Classification Score	F/f	Fat
LPI	Lifetime Production Index	G.S	Grand Sire
Lact.	Lactation	G.D	Grand Dam
M	Milk	Kgs.	Kilograms
MGS	Maternal Grand Sire	KgM	Kilograms Milk

COLOUR CODES OF BREEDS:

Ayshire

Guernsey

Boran

Friesian

Jersey

Sahiwal

EXPLANATION OF TERMS

Linear Evaluation – an assessment of bull’s daughter’s functional type characteristic expression through a unified score rating.

- There are 17 descriptive type traits that are assessed in the evaluation
- Information in this catalogue is based on evaluation score 1 through 9 where 1 and 9 represents the 2 biological expression extremes for each trait.
- Linear appraisal identifies a cow’s strengths and weaknesses and provides a basis for selecting matching sires and mating cows - it can help improve production, increases the number of profitable lactations, reduce the number of herd replacements and generate more profit; making it a valuable management tool for dairy producers.

LINEAR CLASSIFICATION

The linear traits are organized into 5 major classifications. The final score, paints a picture of the overall cow. For example:-

STATURE	Br. Swiss & Holstein	Guernsey	Ayshire	Jersey
9 very tall	≥59”	≥58”	≥57”	≥53”
8				
7 Tall	57”	56”	55”	51”
6				
5 Intermediate	55”	54”	53”	49”
4				
3 Short	53”	52”	51”	47”
2				
1 Very Short	≤50”	≤50”	≤49”	≤45”

FINAL SCORE

A cow’s final score is based on the 5 major classification categories of Frame, Dairy Character, Body Capacity, Feet and Legs and Udder. The classifier numerically scores each category within a range of 1-100 points. These scores are based on the level of desirability exhibited by individual cows for each category compared to the true type model.

The final score is the sum of the major category scores, weighed as follows:-

Cows		Bulls	
Frame	15%	Frame	30%
Dairy Character	20%	Dairy Character	25%
Body Capacity	10%	Body Capacity	20%
Feet and Legs	15%	Feet and Legs	25%
Udder	40%		

In assigning major categories scores the classifier considers such factors as age, number of lactation’s and stage of lactation. The final score is expressed in numbers and corresponding brackets as shown in the following corresponding brackets:

Excellent (E)	90-97 points	Good (G)	75-79 points
Very Good (VG)	85-89 points	Fair (F)	65-74 points
Good Plus (G+)	80-84 points	Poor (P)	50-64 points

KAGRC GENOMIC EVALUATED BULLS

HOLSTEIN FRIESIAN

MARIRU GOVERNOR. FR.4039
 SIRE: SUPERSTITION X MARION X RUDOLF
 BORN: 27.06.13



REG. SIRE: 21652-LXXIV CHARLESDALE SUPERSTITION-ET
DAM: MARIRU MARION LEAH
 305d. 7,361 KgM in 2ND LACTATION.
MGS: VEAZLAND
MGGS: MARION -ET
 STARTMORE RUDOLF-ET

BREEDER:
 AMBONI DAIRY FARM

PRODUCTION AND HEALTH TRAITS

TPI	1722	75%
PTAM	729	76%
PTAF	-7.72	-0.16%
PTAP	5.45	-0.04%
FEED EFF.	-15	76%
DPR%	1.9	70%
PL	0.7	72%
SCS	2.92	74%
HCR	0.8	63%
SCE	7.9	60%
FERTILITY IND	1.8	69%

CALVING TRAITS

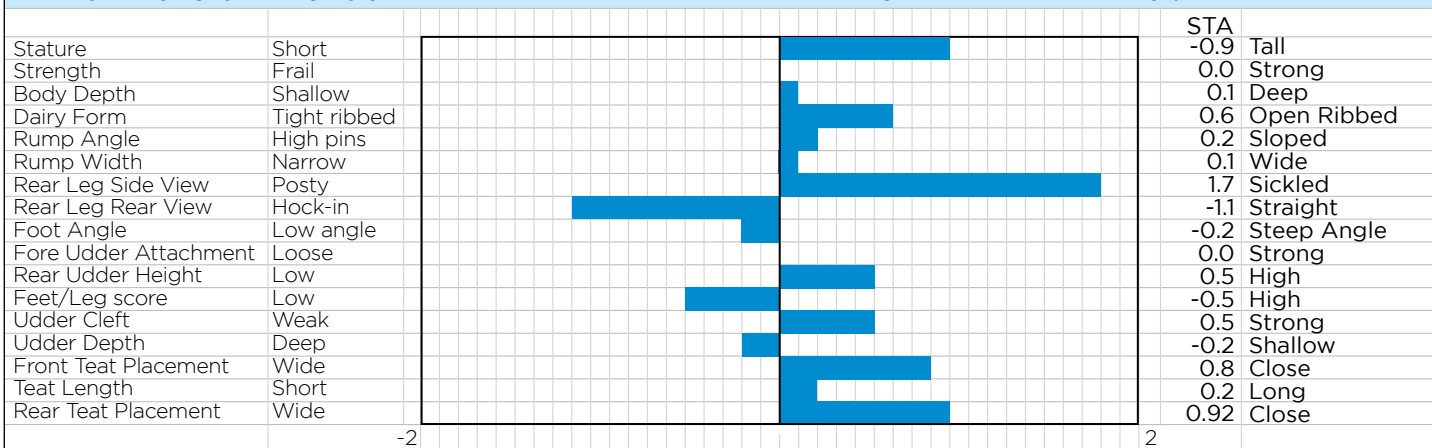
DCE	6.9	57%
SCE	7.9	60%

PHYSICAL TRAIT EVALUATION.

PTAT: 0.1 UDC: 0.2 FLC: -0.6

GENOMIC EVALUATION. JAN.2016

GTPi: 1722. REL.75%



MARIRU MR. STONE FR.4053
 SUPERSIRE X MARION X BLITZ.
 BORN: 19.07.14



REG. SIRE: 22262-LXXV SEAGULL-BAY SUPERSIRE-ET
DAM: MARIRU MARION REBECCA.
 305D, 7,652 KgM IN 2ND LACTATION.
MGS: VEAZLAND
MGGS: MARION-ET
 FUSTEAD EMORY BLITZ.



Dtr. Stone

YIELD AND HEALTH TRAITS

TPI	1933	75%
PTAM	1502	76%
PTAF	25	-0.01%
PTAP	16	-0.04%
FEED EFF.	104	76%
DPR%	-1.1	70%
PL	0.9	72%
SCS	3.12	74%
HCR	0.4	63%
CCR	0.3	60%
FERTILITY IND	-0.6	68%

CALVING TRAITS

DCE	6.1	57%
SCE	7.4	60%

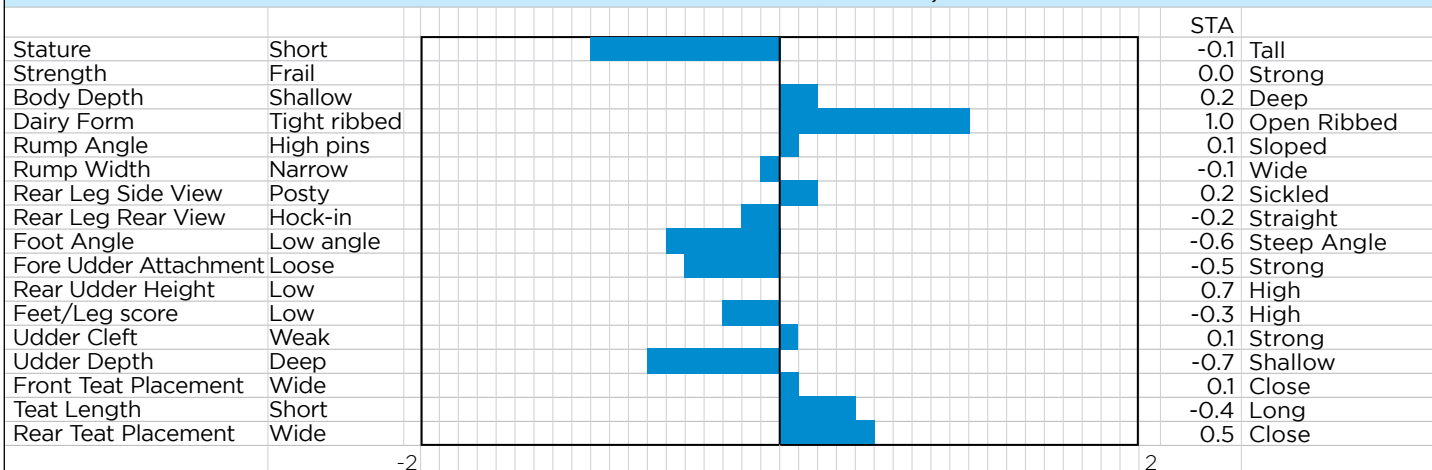
BREEDER:
 AMBONI DAIRY FARM.

PHYSICAL TRAIT EVALUATION.

PTAT: 0.06 UDC :-0.51 FLC: -0.32

GENOMIC EVALUATION. JAN.2016

GTPi: 1933. REL.75%



HOLSTEIN FRIESIAN

MARIRU SUPER BOMOA FR. 4054

SUPERSIRE X ZENITH X RICH- J

BORN: 04.08.14



REG. SIRE:	22263-LXXV SEAGULL-BAY SUPERSIRE-ET
DAM:	MARIRU ZENITH -BEATY. 305d, 7, 047 KgM in HER
MGS:	1 ST LACTATION. OCEAN-VIEW ZENITH.
MGGS:	RICH-J SHAQ-ET

BREEDER:
AMBONI DAIRY FARM

A feed efficient sire with low somatic cell score.

PRODUCTION AND HEALTH TRAITS

TPI	2091	75%
PTAM	602	76%
PTAF	19	0.07%
PTAP	13	0.04%
FEED EFF.	101	76%
DPR%	2.4	70%
PL	13	72%
SCS	2.83	74%
HCR	2.9	63%
CCR	3.4	67%
FERTILITY IND	2.7	68%

CALVING TRAITS

DCE	6.4	57%
SCE	6.1	60%

PHYSICAL TRAIT EVALUATION.

PTAT: -0.09 UDC: -0.16 FLC: -0.71

GENOMIC EVALUATION. JAN.2016

GTPi: 2091. REL.75%

Physical Trait	Genomic Trait	Value
Stature	Short	-0.6
Strength	Frail	-0.1
Body Depth	Shallow	-0.7
Dairy Form	Tight ribbed	0.5
Rump Angle	High pins	-0.2
Rump Width	Narrow	-0.3
Rear Leg Side View	Posty	1.3
Rear Leg Rear View	Hock-in	-0.6
Foot Angle	Low angle	-1.3
Fore Udder Attachment	Loose	-0.6
Rear Udder Height	Low	0.3
Feet/Leg score	Low	-0.4
Udder Cleft	Weak	0.0
Udder Depth	Deep	0.0
Front Teat Placement	Wide	-0.6
Teat Length	Short	-0.2
Rear Teat Placement	Wide	-0.4

TUJENGE 453 BOKEM. FR. 4061

BOOKEM X MARION X MANIFRED JUSTICE

BORN: 04.08.16



REG. SIRE:	23461-LXXVII DE-SU 521 BOOKEM-ET
DAM:	TJ- 804-320 305D, 10,987 KG MILK IN HER 3 RD LACTATION.
MGS:	VEAZLAND MARION-ET
MGGS:	O-BEE MANIFRED JUSTICE-ET

BREEDER:
TUJENGE(K) DAIRY FARM

High genetic ranking sire for type and production.

PRODUCTION AND HEALTH TRAITS

TPI	1849	76%
PTAM	740	77%
PTAF	2	-0.09%
PTAP	7.3	-0.03%
FEED EFF.	8	76%
DPR%	-0.9	72%
PL	1.6	73%
SCS	2.9	75%
HCR	1.9	65%
CCR	2.1	71%
FERTILITY IND	1.3	71%

CALVING TRAITS

DCE	6.1	57%
SCE	7.4	60%

PHYSICAL TRAIT EVALUATION.

PTAT: 0.20 UDC: 0.24 FLC: 0.40

GENOMIC EVALUATION. JAN.2017

GTPi: 1849. REL.76%

Physical Trait	Genomic Trait	Value
Stature	Short	-0.61
Strength	Frail	0.68
Body Depth	Shallow	0.17
Dairy Form	Tight ribbed	-0.36
Rump Angle	High pins	0.8
Rump Width	Narrow	0.36
Rear Leg Side View	Posty	-0.51
Rear Leg Rear View	Hock-in	0.08
Foot Angle	Low angle	0.84
Fore Udder Attachment	Loose	0.71
Rear Udder Height	Low	0.06
Feet/Leg score	Low	0.29
Udder Cleft	Weak	0.1
Udder Depth	Deep	0.28
Front Teat Placement	Wide	0.52
Teat Length	Short	0.21
Rear Teat Placement	Wide	0.67

HOLSTEIN FRIESIAN

IMANI DAVIS SHUJAA FR.4055

DAVIS X CH VALIANT X ELM DANDY
BORN: 12.07.15



REG. SIRE: 22800-LXXXVI
HALO TOYSTORY
DAVIS
DAM: IMANI BELLA 014.
305D, 8,790 KgM
IN HER 3RD
LACTATION.
MGS: BEACHLAWN TAM
CH VARIANT-ET
MGGS: LANGS- TWIN-
ELM DANDY

BREEDER:
IMANI DAIRY FARM

PRODUCTION AND HEALTH TRAITS

TPI	1529	75%
PTAM	677	76%
PTAF	3.6	-0.06%
PTAP	1	-0.06%
FEED EFF.	-3	76%
DPR%	-0.5	69%
PL	0.9	71%
SCS	3.24	74%
HCR	-2	60%
CCR	-0.5	67%
FERTILITY IND	-0.8	68%

CALVING TRAITS

DCE	7.5	55%
SCE	5.6	59%

PHYSICAL TRAIT EVALUATION.

PTAT: -0.23 UDC: 0.04 FLC: -0.67

GENOMIC EVALUATION. JAN.2016

GTPi: 1529. REL.75%

Physical Trait	Value	Genomic Trait	Value
Stature	Short	STA	0.2
Strength	Frail	0.2	Tall
Body Depth	Shallow	-0.1	Strong
Dairy Form	Tight ribbed	-0.1	Deep
Rump Angle	High pins	0.1	Open Ribbed
Rump Width	Narrow	1.0	Sloped
Rear Leg Side View	Posty	-0.4	Wide
Rear Leg Rear View	Hock-in	1.0	Sickled
Foot Angle	Low angle	-0.6	Straight
Fore Udder Attachment	Loose	-0.4	Steep Angle
Rear Udder Height	Low	0.1	Strong
Feet/Leg score	Low	0.1	High
Udder Cleft	Weak	-0.8	High
Udder Depth	Deep	-0.2	Strong
Front Teat Placement	Wide	0.0	Shallow
Teat Length	Short	1.0	Close
Rear Teat Placement	Wide	-0.2	Long
		1.0	Close

TUJENGE 485 ROYCE FR.4059

JIMKA ALTABAXTER X SANA X MANIFRED
JUSTICE BORN: 17.04.16



REG. SIRE: 23395-LXXXVII
JIMKA ALTABAXTER
ROYCE-ET
DAM: TJ- 1106-485
305D, 9235 KG
IN HER 1ST
LACTATION.
MGS: GRAF-ACRES
ELATION SANA-ET
MGGS: O-BEE MANIFRED
JUSTICE.

BREEDER:
AMBONI DAIRY FARM.

PRODUCTION AND HEALTH TRAITS

TPI	1709	76%
PTAM	611	77%
PTAF	0	-0.09%
PTAP	4.1	-0.03%
FEED EFF.	35	76%
DPR%	-0.5	72%
PL	1	73%
SCS	3	75%
HCR	1	65%
CCR	-0.3	71%
FERTILITY IND	-0.2	71%

CALVING TRAITS

DCE	7.2	58%
SCE	6.5	60%

PHYSICAL TRAIT EVALUATION.

PTAT: -0.09 UDC :- 0.37 FLC: -0.27

GENOMIC EVALUATION. JUNE.2017

GTPi: 1709. REL.76%

Physical Trait	Value	Genomic Trait	Value
Stature	Short	STA	-0.26
Strength	Frail	0.12	Strong
Body Depth	Shallow	0.18	Deep
Dairy Form	Tight ribbed	0.74	Open Ribbed
Rump Angle	High pins	0.8	Sloped
Rump Width	Narrow	0.09	Wide
Rear Leg Side View	Posty	0.2	Sickled
Rear Leg Rear View	Hock-in	-0.25	Straight
Foot Angle	Low angle	-0.83	Steep Angle
Fore Udder Attachment	Loose	-0.64	Strong
Rear Udder Height	Low	0.61	High
Feet/Leg score	Low	-0.02	High
Udder Cleft	Weak	0.17	Strong
Udder Depth	Deep	-0.16	Shallow
Front Teat Placement	Wide	0.02	Close
Teat Length	Short	0.13	Long
Rear Teat Placement	Wide	0.14	Close

HOLSTEIN FRIESIAN

SALIENT SPARK EVANS FR.4045

EVANS-ET X SPARKY X MARCUS.

BORN: 16.07.13



REG.	22025-LXXV
SIRE:	RI-VAL-RE SHOTTLE EVANS-ET
DAM:	SALIENT ZANZIBAR SPARKY 1194. 305D, 6,765 KgM IN HER 2 ND LACTATION
MGS:	FRITZLAND
MGGS:	SHENVAL SPARKY CVM SW MARCUS-ET

BREEDER:
MWEIGA ESTATE LTD

YIELD AND HEALTH TRAITS

TPI	1467	74%
PTAM	277	75%
PTAF	18	-0.09%
PTAP	11	-0.03%
FEED EFF.	-5	74%
DPR %	-5	67%
PL	-2.1	70%
SCS	2.99	73%
HCR	-0.2	57%
CCR	-0.8	66%
FERTILITY IND	-0.5	66%

CALVING TRAITS

DCE	8.8	52%
SCE	8.1	57%

PHYSICAL TRAIT EVALUATION.

PTAT: -0.47 UDC:- 1.22 FLC: -0.07

GENOMIC EVALUATION. JAN. 2016

GTPI: 1467 REL.74 %

Stature	Short		STA	-0.47	Tall
Strength	Frail		1.07	Strong	
Body Depth	Shallow		0.43	Deep	
Dairy Form	Tight ribbed		-0.5	Open Ribbed	
Rump Angle	High pins		0.45	Sloped	
Rump Width	Narrow		0.59	Wide	
Rear Leg Side View	Posty		-0.37	Sickled	
Rear Leg Rear View	Hock-in		0.09	Straight	
Foot Angle	Low angle		-0.05	Steep Angle	
Fore Udder Attachment	Loose		-0.7	Strong	
Rear Udder Height	Low		-1.2	High	
Feet/Leg score	Low		-0.21	High	
Udder Cleft	Weak		-0.52	Strong	
Udder Depth	Deep		-0.66	Shallow	
Front Teat Placement	Wide		0.35	Close	
Teat Length	Short		-0.55	Long	
Rear Teat Placement	Wide		0.14	Close	

TUJENGE 478 TAPIC BRANCHIE.

FR. 4058

BROEKS TAPIC X SANA X MARION

BORN: 01.04.16



REG.	23394-LXXXVII
SIRE:	BROEKS TAPIC-ET TUJENGE 1105-478
DAM:	305D, 9,923 KGM IN HER 1 ST LACTATION
MGS:	GRAF-ACRES ELATION SANA.
MGGS:	VEAZLAND MARION-ET.

BREEDER:
TUJENGE (K) DAIRY FARM.

PRODUCTION AND HEALTH TRAITS

TPI	1992	73%
PTAM	607	74%
PTAF	1.4	-0.09%
PTAP	7.3	-0.03%
FEED EFF.	18	76%
DPR%	1.5	72%
PL	5.1	73%
SCS	2.7	75%
HCR	1.5	65%
CCR	-2.3	71%
FERTILITY IND	-1.6	71%

CALVING TRAITS

DCE	6.9	52%
SCE	7	57%

PHYSICAL TRAIT EVALUATION.

PTAT: 0.34 UDC :- 0.66 FLC: 0.82

GENOMIC EVALUATION. JUNE.2017

GTPI: 1992 REL.76%

Stature	Short		STA	-0.34	Tall
Strength	Frail		0.1	Strong	
Body Depth	Shallow		0.56	Deep	
Dairy Form	Tight ribbed		1.03	Open Ribbed	
Rump Angle	High pins		0.46	Sloped	
Rump Width	Narrow		0.08	Wide	
Rear Leg Side View	Posty		-0.83	Sickled	
Rear Leg Rear View	Hock-in		0.51	Straight	
Foot Angle	Low angle		1.08	Steep Angle	
Fore Udder Attachment	Loose		1.42	Strong	
Rear Udder Height	Low		0.43	High	
Feet/Leg score	Low		0.81	High	
Udder Cleft	Weak		0.33	Strong	
Udder Depth	Deep		0.89	Shallow	
Front Teat Placement	Wide		0.44	Close	
Teat Length	Short		-0.29	Long	
Rear Teat Placement	Wide		0.28	Close	

HOLSTEIN FRIESIAN

MARIRU MISSLE RENDILE FR.4065

MISSILE X MARION X EMORY BLITZ
BORN: 18.05.17



REG. SIRE: 23653-LXXV
S.S-1 MONTROSS
MISSILE - ET
DAM; MARIRU
MARION
REBECCA
305D, 8,011KgM in
3RD LACTATION.
MGS: VEASLAND
MARION-ET
MGGS: FUSTEAD EMORY
BLITZ

BREEDER:
AMBONI DAIRY FARM

YIELD AND HEALTH TRAITS

TPI	1890	76%
PTAM	1446	77%
PTAF	15.9	-0.09%
PTAP	14.5	-0.03%
FEED EFF.	82	76%
DPR %	-0.1	70%
PL	1.1	72%
SCS	3.2	75%
HCR	1.2	61%
CCR	1.2	69%
FERTILITY IND	0.4	69%

CALVING TRAITS

DCE	8.2	55%
SCE	8.6	60%

PHYSICAL TRAIT EVALUATION.

PTAT: 0.10 UDC: 0.40 FLC: -0.03

GENOMIC EVALUATION. SEP. 2018

GTPi: 1542. REL.76%

Trait	Value	STA	Value
Stature	Short	-0.2	Tall
Strength	Frail	0.34	Strong
Body Depth	Shallow	0.19	Deep
Dairy Form	Tight ribbed	0.68	Open Ribbed
Rump Angle	High pins	1.53	Sloped
Rump Width	Narrow	-0.13	Wide
Rear Leg Side View	Posty	-1.5	Sickled
Rear Leg Rear View	Hock-in	-0.17	Straight
Foot Angle	Low angle	0.41	Steep Angle
Fore Udder Attachment	Loose	-0.2	Strong
Rear Udder Height	Low	1.51	High
Feet/Leg score	Low	-0.13	High
Udder Cleft	Weak	-0.02	Strong
Udder Depth	Deep	-0.22	Shallow
Front Teat Placement	Wide	-0.07	Close
Teat Length	Short	-0.28	Long
Rear Teat Placement	Wide	0.23	Close

SALIENT 1528 LUCIANO HACKER FR.4067

LUCIANO X ELATION SANA X JACOB.
BORN: 22.07.17



REG. SIRE: 24050-LXXIX
WEBB-VUE BAXTER
LUCIANO-TW
DAM: SALIENT DURURU
SANA-1528
305D, 9,275 KgM
IN 2ND LACTATION
MGS: GRAF-ACRES
ELATION SANA -ET
MGGS: MORNINGVIEW
JACOB

BREEDER:
MWEIGA ESTATE LTD

YIELD AND HEALTH TRAITS

TPI	1798	77%
NET MERIT	145	75%
PTAM	890	78%
PTAF	9	0.00%
PTAP	4	-0.06%
FEED EFF.	13	76%
DPR %	2.2	72%
PL	1	73%
SCS	3	75%
HCR	2.2	66%
CCR	3.4	72%

CALVING TRAITS

DCE	5.9	58%
SCE	6.8	60%

PHYSICAL TRAIT EVALUATION.

PTAT: 0.02 UDC:- 0.75 FLC: -0.24

GENOMIC EVALUATION. SEPT. 2018

GTPi: 1798 REL. 77 %

Trait	Value	STA	Value
Stature	Short	1.18	Tall
Strength	Frail	1.18	Strong
Body Depth	Shallow	1.02	Deep
Dairy Form	Tight ribbed	0.22	Open Ribbed
Rump Angle	High pins	0.8	Sloped
Rump Width	Narrow	0.72	Wide
Rear Leg Side View	Posty	0.39	Sickled
Rear Leg Rear View	Hock-in	-0.1	Straight
Foot Angle	Low angle	0.86	Steep angle
Fore Udder Attachment	Loose	-0.84	Strong
Rear Udder Height	Low	-0.51	High
Rear Udder width	Narrow	-0.47	Wide
Feet/Leg score	Low	-0.08	High
Udder Cleft	Weak	0.74	Strong
Udder Depth	Deep	-0.69	Shallow
Front Teat Placement	Wide	0.32	Close
Teat Length	Short	-0.04	Long
Rear Teat Placement	Wide	0.51	Close

HOLSTEIN FRIESIAN

EDFARM PRINCETON EDWARD. FR.4070
 CO-OP PRINCETON X LARON X KABURU (364)
 BORN: 06.02.18



REG: 24052-LXXIX
SIRE: CO-OP PRINCETON-ET
DAM: EDFARM JULY 305D, 10,957 KgM IN HER 2ND LACTATION
MGS: LESPERRON LARON
MGGS: MARIRU EMORY KABURU

BREEDER: EDFARM DAIRY FARM

YIELD AND HEALTH TRAITS

TPI	1835	76%
Net MERIT	237	73%
PTAM	1158	77%
PTAF	8	-0.09%
PTAP	8	-0.06%
FEED EFF.	40	76%
DPR %	-0.7	72%
PL	1.8	72%
SCS	2.9	75%
HCR	-2.4	66%
CCR	0.6	71%
FERTILITY IND	-0.8	72%

CALVING TRAITS

DCE	4.5	55%
SCE	5.6	59%

Great balance of production and excellent udder bull.

PHYSICAL TRAIT EVALUATION.

PTAT: 0.29 UDC: 0.30, FLC: -0.30

GENOMIC EVALUATION. SEPT. 2018

GTPI: 1835. REL. 76 %

Trait	Value	Visual	Value	Trait
Stature	Short		STA	-0.54 Tall
Strength	Frail		0.1	Strong
Body Depth	Shallow		0.03	Deep
Dairy Form	Tight ribbed		0.17	Open Ribbed
Rump Angle	High pins		0.44	Sloped
Rump Width	Narrow		-0.39	Wide
Rear Leg Side View	Posty		0.18	Sickled
Rear Leg Rear View	Hock-in		-0.51	Straight
Foot Angle	Low angle		-0.06	Steep angle
Fore Udder Attachment	Loose		0.24	Strong
Rear Udder Height	Low		0.77	High
Rear Udder width	Narrow		0.71	Wide
Feet/Leg score	Low		-0.29	High
Udder Cleft	Weak		0.07	Strong
Udder Depth	Deep		0.38	Shallow
Front Teat Placement	Wide		-0.16	Close
Teat Length	Short		1.33	Long
Rear Teat Placement	Wide		-0.15	Close

MARIRU KINGBOY BARAKA FR.4069
 MCC KINGBOY-ET X ELATION SANA-ET X
 SHAQ-ET. BORN: 06.02.18



REG: 24052-LXXIX
SIRE: MORNINGVIEW MCC KINGBOY-ET
DAM: MARIRU SANA BILHA. 305D, 9, 303 KgM IN HER 2ND LACTATION
MGS: GRAF-ACRES ELATION SANA -ET
MGGS: RICH-J SHAQ-ET

BREEDER: AMBONI DAIRY FARM

YIELD AND HEALTH TRAITS

TPI	1773	77%
NET MERIT	66	75%
PTAM	920	78%
PTAF	11	-0.08%
PTAP	29	0.00%
FEED EFF.	36	75%
DPR %	0.1	75%
PL	-1	75%
SCS	3.2	76%
HCR	0.3	70%
CCR	-0.2	74%
FERTILITY IND	0.1	76%

CALVING TRAITS

DCE	5.7	60%
SCE	8.3	60%

A sire with dairy strength and excellent leg set.

PHYSICAL TRAIT EVALUATION.

PTAT: 0.72 UDC:- 0.33, FLC: 0.13

GENOMIC EVALUATION. SEPT. 2018

GTPI: 1773 REL. 76 %

Trait	Value	Visual	Value	Trait
Stature	Short		STA	1.32 Tall
Strength	Frail		1.56	Strong
Body Depth	Shallow		1.28	Deep
Dairy Form	Tight ribbed		0.72	Open Ribbed
Rump Angle	High pins		0.23	Sloped
Rump Width	Narrow		1.33	Wide
Rear Leg Side View	Posty		0	Sickled
Rear Leg Rear View	Hock-in		0.43	Straight
Foot Angle	Low angle		0.65	Steep angle
Fore Udder Attachment	Loose		0.03	Strong
Rear Udder Height	Low		0.63	High
Rear Udder width	Narrow		0.5	Wide
Feet/Leg score	Low		0.31	High
Udder Cleft	Weak		-0.45	Strong
Udder Depth	Deep		-0.57	Shallow
Front Teat Placement	Wide		-0.67	Close
Teat Length	Short		0.59	Long
Rear Teat Placement	Wide		-0.96	Close

HOLSTEIN FRIESIAN

MARIRU YODER WAITA FR 4062

YODER-ET X RICH-J SHAQ-ET X BERND
BORN: 25.11.16



REG: 23554-LXXVIII
SIRE: WOODCREST
MOGUL
YODER-ET
DAM: MARIRU WAMUYU
SHAQ
305D, 8, 011 KgM
IN HER 3RD
LACTATION
MGS: RICH-J SHAQ -ET
MGGS: BERND IMP.

BREEDER:
AMBONI DAIRY FARM

YIELD AND HEALTH TRAITS

TPI	1988	77%
NET MERIT	397	75%
PTAM	340	78%
PTAF	33	0.07%
PTAP	12	0.01%
FEED EFF.	72	77%
DPR %	3.4	73%
PL	4.2	73%
SCS	2.9	76%
HCR	2	67%
CCR	4.5	72%
FERTILITY IND	3.3	73%

CALVING TRAITS

DCE	5.1	59%
SCE	6.3	61%

PHYSICAL TRAIT EVALUATION.

PTAT: -1.04 **UDC:- 0.29** **FLC: -0.18**

GENOMIC EVALUATION. SEPT. 2018

GTPI: 1988 **REL. 76 %**

Physical Trait	Genomic Trait	Value
Stature	Short	-0.65
Strength	Frail	-0.15
Body Depth	Shallow	-0.91
Dairy Form	Tight ribbed	-0.26
Rump Angle	High pins	-0.35
Rump Width	Narrow	-0.5
Rear Leg Side View	Posty	-0.22
Rear Leg Rear View	Hock-in	0
Foot Angle	Low angle	-0.74
Fore Udder Attachment	Loose	-0.53
Rear Udder Height	Low	-0.41
Rear Udder width	Narrow	-0.38
Feet/Leg score	Low	-0.64
Udder Cleft	Weak	-0.39
Udder Depth	Deep	-0.49
Front Teat Placement	Wide	-0.73
Teat Length	Short	-0.63
Rear Teat Placement	Wide	-0.66
STA	Tall	1.18
	Strong	1.18
	Deep	1.02
	Open Ribbed	0.22
	Sloped	0.8
	Wide	0.72
	Sickled	0.39
	Straight	-0.1
	Steep angle	0.86
	Strong	-0.84
	High	-0.51
	Wide	-0.47
	High	-0.08
	Strong	0.74
	Shallow	-0.69
	Close	0.32
	Long	-0.04
	Close	0.51

IMANI CLINCHER RUDISHA FR.4063

513 CLINCHER X DIEHARD DEANO X
KEBENEI 34TH. BORN: 31.01.17



REG: 23553-LXXVIII
SIRE: DE-SU 513
CLINCHER-ET
DAM: IMANI NYAKAIRU
019 305D, 7,
184 KgM IN HER
2ND LACTATION
MGS: ZIMMERVIEW
DIEHARD
DEANO-ET
MGGS: KAPSOEN
KEBENEI 34TH.
(FR.312)

BREEDER:
IMANI DAIRY FARM

YIELD AND HEALTH TRAITS

TPI	1552	75%
NET MERIT	1	73%
PTAM	243	77%
PTAF	12	0.01%
PTAP	4	-0.21%
FEED EFF.	22	75%
DPR %	-0.9	70%
PL	0.6	71%
SCS	2.9	73%
HCR	2	60%
CCR	-0.3	69%
FERTILITY IND	-0.3	69%

CALVING TRAITS

DCE	9.2	52%
SCE	7.6	57%

PHYSICAL TRAIT EVALUATION.

PTAT: -0.80 **UDC:- 0.41** **FLC: -1.62**

GENOMIC EVALUATION. SEPT. 2018

GTPI: 1552 **REL. 75%**

Physical Trait	Genomic Trait	Value
Stature	Short	1.18
Strength	Frail	1.18
Body Depth	Shallow	1.02
Dairy Form	Tight ribbed	0.22
Rump Angle	High pins	0.8
Rump Width	Narrow	0.72
Rear Leg Side View	Posty	0.39
Rear Leg Rear View	Hock-in	-0.1
Foot Angle	Low angle	0.86
Fore Udder Attachment	Loose	-0.84
Rear Udder Height	Low	-0.51
Rear Udder width	Narrow	-0.47
Feet/Leg score	Low	-0.08
Udder Cleft	Weak	0.74
Udder Depth	Deep	-0.69
Front Teat Placement	Wide	0.32
Teat Length	Short	-0.04
Rear Teat Placement	Wide	0.51
STA	Tall	1.18
	Strong	1.18
	Deep	1.02
	Open Ribbed	0.22
	Sloped	0.8
	Wide	0.72
	Sickled	0.39
	Straight	-0.1
	Steep angle	0.86
	Strong	-0.84
	High	-0.51
	Wide	-0.47
	High	-0.08
	Strong	0.74
	Shallow	-0.69
	Close	0.32
	Long	-0.04
	Close	0.51

HOLSTEIN FRIESIAN

MARIRU UPTOWN DOLAN FR.4064
 UPTOWN -ET X PRONTO-ET
 BORN: 12.02.17



REG. SIRE: 23555-LXXVIII MORNINGVIEW MGL UPTOWN-ET
DAM: MARIRU DOLLY PRONTO 305D, 7,529 KgM IN HER 2ND LACTATION
MGS: WINDY-KNOLL-VIEW PRONTO-ET
MGGS:

BREEDER: AMBONI DAIRY FARM

YIELD AND HEALTH TRAITS

TPI	1881	76%
NET MERIT	153	74%
PTAM	362	77%
PTAF	8	0.02%
PTAP	5	0.00%
FEED EFF.	10	76%
DPR %	1.2	72%
PL	1.5	73%
SCS	3	75%
HCR	1.7	66%
CCR	2.5	71%
FERTILITY IND	1.5	72%

CALVING TRAITS

DCE	6.7	56%
SCE	7.7	61%

A feet and leg improver.

PHYSICAL TRAIT EVALUATION.

PTAT:0.84 UDC:- 0.59 FLX -0.87

GENOMIC EVALUATION. SEPT. 2018

GTPI: 1881. REL. 76 %

Trait	Value	Scale	STA	Value
Stature	Short		1.31	Tall
Strength	Frail		1.87	Strong
Body Depth	Shallow		1.27	Deep
Dairy Form	Tight ribbed		-0.35	Open Ribbed
Rump Angle	High pins		0.07	Sloped
Rump Width	Narrow		0.75	Wide
Rear Leg Side View	Posty		-0.6	Sickled
Rear Leg Rear View	Hock-in		0.94	Straight
Foot Angle	Low angle		1.14	Steep angle
Fore Udder Attachment	Loose		1.04	Strong
Rear Udder Height	Low		1.47	High
Rear Udder width	Narrow		1.35	Wide
Feet/Leg score	Low		1.06	High
Udder Cleft	Weak		-0.43	Strong
Udder Depth	Deep		0.62	Shallow
Front Teat Placement	Wide		-0.07	Close
Teat Length	Short		0.66	Long
Rear Teat Placement	Wide		-0.3	Close

SALIENT 1588 TAPIC TOPIC FR. 4066
 BROEKS TAPIC-ET X DOTSON-ET X VETO -ET
 BORN. 23.06.17



REG. SIRE: 24049-LXXIX BROEKS TAPIC-ET SALIENT KILGORIS DOTSON -1588 305D, 8,249 KgM IN HER 1ST LACTATION
MGS: TOMLU OMAN DOTSON-ET.
MGGS: MIL-JOY BULLET VETO-ET

BREEDER: MWEIGA ESTATE LTD

YIELD AND HEALTH TRAITS

TPI	1788	76%
NET MERIT	140	73%
PTAM	200	77%
PTAF	-7	-0.05%
PTAP	13	0.03%
FEED EFF.	6	75%
DPR %	1.5	71%
PL	1.8	72%
SCS	3	74%
HCR	0.5	65%
CCR	1.4	71%
FERTILITY IND	1.3	71%

CALVING TRAITS

DCE	6.1	54%
SCE	5.5	59%

PHYSICAL TRAIT EVALUATION.

PTAT: 0.07 UDC: 0.28 FLC: 0.43

GENOMIC EVALUATION. SEPT. 2018

GTPI: 1788 REL. 76 %

Trait	Value	Scale	STA	Value
Stature	Short		-0.44	Tall
Strength	Frail		0.27	Strong
Body Depth	Shallow		-0.3	Deep
Dairy Form	Tight ribbed		-1.19	Open Ribbed
Rump Angle	High pins		0.97	Sloped
Rump Width	Narrow		-0.5	Wide
Rear Leg Side View	Posty		-0.86	Sickled
Rear Leg Rear View	Hock-in		0.28	Straight
Foot Angle	Low angle		0.9	Steep angle
Fore Udder Attachment	Loose		0.87	Strong
Rear Udder Height	Low		-0.03	High
Rear Udder width	Narrow		-0.03	Wide
Feet/Leg score	Low		0.21	High
Udder Cleft	Weak		-0.25	Strong
Udder Depth	Deep		0.44	Shallow
Front Teat Placement	Wide		0.19	Close
Teat Length	Short		-0.16	Long
Rear Teat Placement	Wide		-0.3	Close

HOLSTEIN FRIESIAN

KINUTHIA SUHNSTAR EMMANUEL FR.4068
 SUHNSTAR X ENGLAND SCHILL X DUSTER
 ROYAL. BORN: 08.10.17



REG. 24051-LXXIX
SIRE: TW SUHNSTAR
 (515 HO 00137)
DAM: KINUTHIA LEAH.
 305D, 8,802 KgM
 IN HER 2ND
 LACTATION
MGS: ENGLAND-SCHILL
 DN 171A
MGGS: AURORA - AIR
 DUSTER ROYAL

BREEDER:
 KINUTHIA DAIRY FARM

An easy carving sire.

YIELD AND HEALTH TRAITS

TPI	1815	75%
NET MERIT	116	73%
PTAM	381	77%
PTAF	13	0.00%
PTAP	3	-0.03%
FEED EFF.	4	75%
DPR %	1.6	71%
PL	1.9	71%
SCS	2.9	74%
HCR	0.2	65%
CCR	1.4	69%
FERTILITY IND	1.2	70%

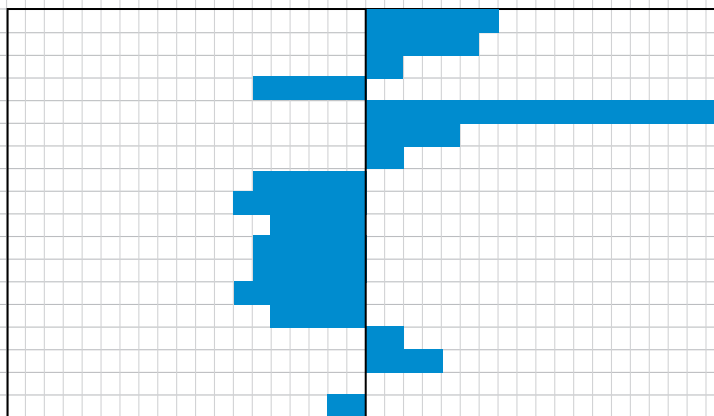
CALVING TRAITS

DCE	6.1	54%
SCE	5.5	59%

PHYSICAL TRAIT EVALUATION.

PTAT: -0.14 **UDC:- 0.57** **FLC: -0.86**

Stature	Short
Strength	Frail
Body Depth	Shallow
Dairy Form	Tight ribbed
Rump Angle	High pins
Rump Width	Narrow
Rear Leg Side View	Posty
Rear Leg Rear View	Hock-in
Foot Angle	Low angle
Fore Udder Attachment	Loose
Rear Udder Height	Low
Rear Udder width	Narrow
Feet/Leg score	Low
Udder Cleft	Weak
Udder Depth	Deep
Front Teat Placement	Wide
Teat Length	Short
Rear Teat Placement	Wide



GENOMIC EVALUATION. AUGUST. 2018

GTPI: 1815 **REL. 75 %**

STA	0.7	Tall
	0.57	Strong
	0.22	Deep
	-0.58	Open Ribbed
	2.37	Sloped
	0.52	Wide
	0.19	Sickled
	-0.63	Straight
	-0.7	Steep angle
	-0.49	Strong
	-0.63	High
	-0.58	Wide
	-0.68	High
	-0.51	Strong
	0.23	Shallow
	0.41	Close
	0.02	Long
	-0.21	Close

IMANI WOLFGANG DANNY FR 4044
 WOLFGANG-ET X KADET-ET X MANAGER
 BORN: 08.07.13



REG. 22024-LXXV
SIRE: KRULLCREST-H
 WOLFGANG-ET
DAM: IMANI CHIKU 015
 305D, 6,694 KgM
 IN HER 2ND
 LACTATION
MGS: CRAIG MAGGIE
 KADET-ET
MGGS: COMESTAR
 MANAGER

BREEDER:
 IMANI DAIRY FARM

*A compact sire with
 tremendous strength.*

YIELD AND HEALTH TRAITS

TPI	1656	76%
NET MERIT	36	72%
PTAM	515	31%
PTAF	13	0.06%
PTAP	9	-0.03%
FEED EFF.	36	74%
DPR %	-0.2	69%
PL	-0.2	70%
SCS	2.87	73%
HCR	-0.2	59%
CCR	-0.4	66%
FERTILITY IND	-0.2	68%

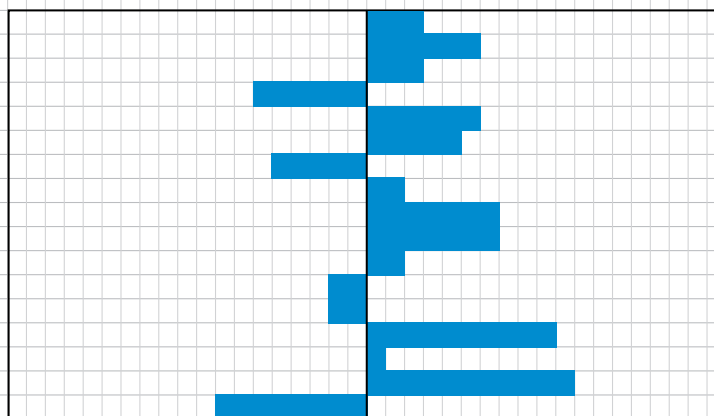
CALVING TRAITS-2016

DCE	6.1	53%
SCE	8.1	56%

PHYSICAL TRAIT EVALUATION.

PTAT: 0.29 **UDC:0.35** **FLC: 0.13**

Stature	Short
Strength	Frail
Body Depth	Shallow
Dairy Form	Tight ribbed
Rump Angle	High pins
Rump Width	Narrow
Rear Leg Side View	Posty
Rear Leg Rear View	Hock-in
Foot Angle	Low angle
Fore Udder Attachment	Loose
Rear Udder Height	Low
Feet/Leg score	Low
Udder Cleft	Weak
Udder Depth	Deep
Front Teat Placement	Wide
Teat Length	Short
Rear Teat Placement	Wide



GENOMIC EVALUATION. JANUARY.2016

GTPI: 1656 **REL. 75 %**

STA	0.34	Tall
	0.59	Strong
	0.27	Deep
	-0.62	Open Ribbed
	0.58	Sloped
	0.51	Wide
	-0.49	Sickled
	0.15	Straight
	0.68	Steep Angle
	0.71	Strong
	0.18	High
	-0.19	High
	-0.15	Strong
	0.95	Shallow
	-0.11	Close
	1.08	Long
	-0.79	Close

HOLSTEIN FRIESIAN

TINTAWN KAMORO **FR. 4047**
 MORAZAN X PAUL-BRO JFK X HAVEN
 BORN: 03.09.13



REG. 21743-LXXIV
SIRE: DELTA MORAZAN
DAM: TINTAWN KATE
 305D, 7,252 KgM
 IN HER 2ND
 LACTATION
MGS: PAUL-BRO JFK
MGGS: SASUMUA HAVEN
BREEDER:
 TINTAWN DAIRY FARM

YIELD AND HEALTH TRAITS		
TPI	1464	75%
NET MERIT	-103	72%
PTAM	306	75%
PTAF	15	0.10%
PTAP	11	0.01%
FEED EFF.	2	75%
DPR %	-0.7	68%
PL	-2	70%
SCS	3.09	73%
HCR	-1.2	59%
CCR	-2.1	66%
FERTILITY IND	-1	67%
CALVING TRAITS		
DCE	9.6	53%
SCE	7.8	56%

PHYSICAL TRAIT EVALUATION.		GENOMIC EVALUATION. JANUARY.2016		
PTAT: -0.56	UDC:- 0.49	FLC: -0.22	GTPI: 1464	
			REL. 75 %	
Stature	Short		STA	
Strength	Frail		-0.45	Tall
Body Depth	Shallow		-0.1	Strong
Dairy Form	Tight ribbed		-0.32	Deep
Rump Angle	High pins		-0.8	Open Ribbed
Rump Width	Narrow		0.24	Sloped
Rear Leg Side View	Posty		-0.85	Wide
Rear Leg Rear View	Hock-in		-0.97	Sickled
Foot Angle	Low angle		-0.67	Straight
Fore Udder Attachment	Loose		0.37	Steep Angle
Rear Udder Height	Low		-0.41	Strong
Feet/Leg score	Low		-0.93	High
Udder Cleft	Weak		-0.52	High
Udder Depth	Deep		0.06	Strong
Front Teat Placement	Wide		-0.66	Shallow
Teat Length	Short		1.25	Close
Rear Teat Placement	Wide		-0.47	Long
			1.18	Close

MARIRU JAMAA **FR. 4056**
 JEEVES PAUL-ET X AMATEUR-ET X BLITZ.
 BORN: 14.07.15



REG. 22801-LXXVI
SIRE: ENSENADA
 JEEVES PAUL-ET
DAM: MARIRU AMATUER
 JAMHURI
 305D, 8,149 KgM IN
 HER 2ND LACTATION
MGS: BAY-BOB
 AMATEUR-ET
MGGS: FUSTEAD EMORY
 BLITZ.
BREEDER:
 AMBONI DAIRY FARM

YIELD AND HEALTH TRAITS		
TPI	1972	75%
NET MERIT	307	74%
PTAM	146	76%
PTAF	14	0.04%
PTAP	18	0.05%
FEED EFF.	57	75%
DPR %	3.2	70%
PL	3.7	72%
SCS	2.8	74%
HCR	2.3	62%
CCR	4.4	68%
FERTILITY IND	3.3	69%
CALVING TRAITS-2016		
DCE	8	56%
SCE	8.5	59%

High fertility sire with excellent feet and leg set.

PHYSICAL TRAIT EVALUATION.		GENOMIC EVALUATION. JANUARY.2016		
PTAT: -0.10	UDC:- 0.33	FLC: 0.03	GTPI: 1972	
			REL. 75 %	
Stature	Short		STA	
Strength	Frail		-0.39	Tall
Body Depth	Shallow		-0.83	Strong
Dairy Form	Tight ribbed		-0.71	Deep
Rump Angle	High pins		0.82	Open Ribbed
Rump Width	Narrow		1.06	Sloped
Rear Leg Side View	Posty		-1.06	Wide
Rear Leg Rear View	Hock-in		0.12	Sickled
Foot Angle	Low angle		0	Straight
Fore Udder Attachment	Loose		-0.38	Steep Angle
Rear Udder Height	Low		-0.5	Strong
Feet/Leg score	Low		0.52	High
Udder Cleft	Weak		0.26	High
Udder Depth	Deep		-0.69	Strong
Front Teat Placement	Wide		-0.5	Shallow
Teat Length	Short		-0.79	Close
Rear Teat Placement	Wide		-0.01	Long
			-0.7	Close

HOLSTEIN FRIESIAN

SASUMUA DUNCAN FR.4057

SUBLIME X LEE X ALLEN.
BORN: 27.10.15



REG. SIRE: 22943-LXXVI
NORMANNA
BUCKEYE
SUBLIME

DAM: SASUMUA DUBAI
K8750 305D,
9,987 KgM IN HER
3RD LACTATION

MGS: COMESTAR LEE
MGGS: CANYON BREEZE
ALLEN-ET

BREEDER:
KENANA FARM LTD

YIELD AND HEALTH TRAITS

TPI	1612	76%
NET MERIT	30	74%
PTAM	225	77%
PTAF	-1	0.09%
PTAP	-8	-0.03%
FEED EFF.	2	75%
DPR %	-0.2	71%
PL	0.4	72%
SCS	3	75%
HCR	1	62%
CCR	-1	70%
FERTILITY IND -	0.1	70%

CALVING TRAITS

DCE	7.5	57%
SCE	7.2	60%

An excellent udder bull.

PHYSICAL TRAIT EVALUATION.

PTAT: 0.21 UDC: 0.66 FLC: 0.31

GENOMIC EVALUATION. JULY.2017

GTPI: 1612 REL. 76 %

Physical Trait	Genomic Trait	Score	Scale
Stature	STA	-1.12	Tall
Strength		0.04	Strong
Body Depth		0.8	Deep
Dairy Form		0.5	Open Ribbed
Rump Angle		-0.61	Sloped
Rump Width		0.4	Wide
Rear Leg Side View		0.34	Sickled
Rear Leg Rear View		0.41	Straight
Foot Angle		-0.01	Steep Angle
Fore Udder Attachment		0.31	Strong
Rear Udder Height		1.24	High
Feet/Leg score		0.53	High
Udder Cleft		1.6	Strong
Udder Depth		0.34	Shallow
Front Teat Placement		1.06	Close
Teat Length		0.07	Long
Rear Teat Placement		1.6	Close

TUJENGE Tabasco BROWN FR.4079

WEIGELINE JACEY TABASCO-ET
BORN: 01.10.2019



REG. SIRE: 26012 VOL.LXXXII
WEIGELINE JACEY
TABASCO-ET

DAM: TUJENGE TJ.581
305D, 11,50 KgM
IN HER 1ST
LACTATION

MGS: MS M-PONDHILL
BUCKEYE PILOT

BREEDER:
TUJENGE (K) DAIRY FARM

*High genetic ranking for
production, carving ease and
balanced conformation traits.*

YIELD AND HEALTH TRAITS

TPI	2219	79%
NET MERIT	258	73%
PTAM	1713	80%
PTAF	8	-0.19%
PTAP	40	-0.04%
FEED EFF.	94	80%
DPR%	0.2	76%
PL	0.4	76%
SCS	3.01	77%
HCR	0.5	73%
SCE	0.8	76%
FERTILITY IND	0.3	77%

CALVING TRAITS

DCE	2.3	61%
SCE	2.3	62%

Haplotypes Impacting Fertility-Tested free
HH1T, HH2T, HH3T, HH4T, HH5T, HH6T.

PHYSICAL TRAIT EVALUATION.

PTAT: 0.07 UDC:0.46, FLC: 0.38 .

GENOMIC EVALUATION. SEPTEMBER 2021

GTPI: 2219. REL. 79 %

Physical Trait	Genomic Trait	Score	Scale
Stature	STA	0.06	Tall
Strength		-0.09	Strong
Body Depth		-0.13	Deep
Dairy Form		0.51	Open Ribbed
Rump Angle		0.58	Sloped
Rump Width		0.36	Wide
Rear Leg Side View		-0.07	Sickled
Rear Leg Rear View		0.31	Straight
Foot Angle		-0.32	Steep Angle
Fore Udder Attachment		-0.44	Strong
Rear Udder Width		1.64	Wide
Rear Udder Height		0.61	High
Feet/Leg score		0.35	High
Udder Cleft		1.48	Strong
Udder Depth		-0.64	Shallow
Front Teat Placement		1.19	Close
Teat Length		-0.99	Long
Rear Teat Placement		1.91	Close

HOLSTEIN FRIESIAN

Mariru Mogul DONALD FR.4071
BORN: 10.05.2018



REG. VOL.LXXIV 24240
SIRE: MOULTFIELD SSI
DCY MOGUL-ET
DAM: MARIRU TOYSTORY
DARLENE
305D, 9,987 KgM IN
HER 3RD LACTATION
MGS: JENNY-LOU MRSHL
TOYSTORY-ET

BREEDER:
AMBONI DAIRY FARM

An easy carving sire with a rich pedigree for production

YIELD AND HEALTH TRAITS

TPI	2078	77%
PTAM	128	76%
PTAF	913	78%
PTAP	35	0.00%
FEED EFF.	6	-0.08%
DPR%	53	77%
PL	2.4	75%
SCS	-0.3	76%
HCR	3.01	77%
SCE	0	71%
FERTILITY IND	-1.9	75%

CALVING TRAITS

DCE	2.7	60%
SCE	2.1	62%

Haplotypes Impacting Fertility.-Tested free
HH1T, HH2T, HH3T, HH4T, HH5T, HH6T.

PHYSICAL TRAIT EVALUATION.

PTAT: 0.09 UDC:0.57, FLC: 0.65 .

GENOMIC EVALUATION. SEPTEMBER 2020

GTPI: 2078. REL. 77 %

Trait	Value	STA	Scale
Stature	Short	-0.57	Tall
Strength	Frail	-0.14	Strong
Body Depth	Shallow	0.28	Deep
Dairy Form	Tight ribbed	0.87	Open Ribbed
Rump Angle	High pins	0.23	Sloped
Rump Width	Narrow	-0.26	Wide
Rear Leg Side View	Posty	-1.03	Sickled
Rear Leg Rear View	Hock-in	0.79	Straight
Foot Angle	Low angle	0.57	Steep Angle
Fore Udder Attachment	Loose	0.05	Strong
Rear Udder Width	Narrow	1.48	Wide
Rear Udder Height	Low	1.61	High
Feet/Leg score	Low	0.42	High
Udder Cleft	Weak	-0.2	Strong
Udder Depth	Deep	-0.7	Shallow
Front Teat Placement	Wide	-1.27	Close
Teat Length	Short	0.61	Long
Rear Teat Placement	Wide	-0.92	Close

Mariru Hardrock TONARDO FR.4077
BORN: 26.07.19



REG. 25452 VOL.LXXXI
SIRE: COOKIECUTTER
MD HARDROCK-ET
DAM: MARIRU SHOT
TIANA
305D, 8,031 KgM
IN HER 1ST
LACTATION
MGS: LINCOLN-HILL
SHOT LASER-ET
MGGS:

BREEDER:
AMBONI DAIRY FARM

A dairy form and strength improver.

YIELD AND HEALTH TRAITS

TPI	2078	77%
NET MERIT	121	76%
PTAM	463	77%
PTAF	35	6%
PTAP	13	0.00%
FEED EFF.	74	74%
DPR%	-1.6	72%
PL	-1.4	74%
SCS	3.25	74%
HCR	-1.6	70%
CCRate	-2.2	72%
FERTILITY IND	-1.5	72%

CALVING TRAITS

DCE	6.1	56%
SCE	6	61%

Haplotypes Impacting Fertility.-Tested free
HH1T, HH2T, HH3T, HH4T, HH5T, HH6T.

PHYSICAL TRAIT EVALUATION.

PTAT: 0.60 UDC:0.30, FLC: 0.19

USDA-CDCB/HA

GENOMIC EVALUATION. JUNE 2020

GTPI: 2088. REL. 75 %

Trait	Value	STA	Scale
Stature	Short	0.21	Tall
Strength	Frail	0.15	Strong
Body Depth	Shallow	0.6	Deep
Dairy Form	Tight ribbed	1.75	Open Ribbed
Rump Angle	High pins	0.17	Sloped
Rump Width	Narrow	-0.13	Wide
Rear Leg Side View	Posty	0.6	Sickled
Rear Leg Rear View	Hock-in	0.3	Straight
Foot Angle	Low angle	-0.76	Steep Angle
Fore Udder Attachment	Loose	-0.07	Strong
Rear Udder Width	Narrow	1.42	Wide
Rear Udder Height	Low	1.54	High
Feet/Leg score	Low	0.28	High
Udder Cleft	Weak	-0.58	Strong
Udder Depth	Deep	-1	Shallow
Front Teat Placement	Wide	-0.28	Close
Teat Length	Short	0.33	Long
Rear Teat Placement	Wide	-0.71	Close

HOLSTEIN FRIESIAN

MARIRU Hardrock ROGER FR.4078
BORN: 17.10.19



REG. 25362 VOL.LXXX
SIRE: COOKIECUTTER
MD HARDROCK-ET
DAM: MARIRU MORTY
REKA
305D, 10,436 KgM
IN HER 5TH
LACTATION
MGS: STOUDEUR MORTY
MGS: VEAZLAND
MARIONE-ET

BREEDER:
AMBONI DAIRY FARM

YIELD AND HEALTH TRAITS

TPI	1794	75%
NET MERIT	31	29%
PTAM	368	77%
PTAF	-4	-0.06%
PTAP	-2	-0.05%
FEED EFF.	33	29%
DPR%	-1.6	72%
PL	-1.9	73%
SCS	3.08	74%
HCR	-0.6	69%
CCRate	-1.6	72%
FERTILITY IND	-1.5	72%

CALVING TRAITS

DCE	6.9	55%
SCE	8.2	61%

Haplotypes Impacting Fertility.-Tested free
HH1T, HH2T, HH3T, HH4T, HH5T, HH6T.

PHYSICAL TRAIT EVALUATION.

PTAT: 0.19 UDC:0.01, FLC: -0.42 .

GENOMIC EVALUATION. JUNE 2020

GTPI: 1794. REL. 75 %

Trait	Value	Scale	STA	Value	Scale
Stature	Short		0.33	Tall	
Strength	Frail		1.05	Strong	
Body Depth	Shallow		0.81	Deep	
Dairy Form	Tight ribbed		-0.02	Open Ribbed	
Rump Angle	High pins		0.82	Sloped	
Rump Width	Narrow		-0.27	Wide	
Rear Leg Side View	Posty		-0.06	Sickled	
Rear Leg Rear View	Hock-in		-0.15	Straight	
Foot Angle	Low angle		-0.17	Steep Angle	
Fore Udder Attachment	Loose		0.18	Strong	
Rear Udder Width	Narrow		0.32	Wide	
Rear Udder Height	Low		0.35	High	
Feet/Leg score	Low		-0.37	High	
Udder Cleft	Weak		-0.42	Strong	
Udder Depth	Deep		-0.43	Shallow	
Front Teat Placement	Wide		0.35	Close	
Teat Length	Short		-0.04	Long	
Rear Teat Placement	Wide		0.28	Close	

MARIRU Duke PUMA FR.4074
BORN: 26.07.19



REG. 24372 VOL.LXXIX
SIRE: S-S-I MONTROSE
DUKE-ET
DAM: MARIRU PRONTO
PURITY
305D, 8,117 KgM
IN HER 3RD
LACTATION
MGS: WINDY-KNOLL
VIEW PRONTO-ET

BREEDER:
AMBONI DAIRY FARM

*A great balance of strength
and udder improver.*

YIELD AND HEALTH TRAITS

TPI	2081	79.7%
NET MERIT	94	75%
PTAM	816	78%
PTAF	33	0.01%
PTAP	22	-0.01%
FEED EFF.	63	84%
DPR%	-0.9	74%
PL	0.4	76%
SCS	3.01	77%
HCR	0.5	73%
CC Rate	0.8	76%
FERTILITY IND	0.3	77%

CALVING TRAITS

DCE	6.9	56%
SCE	7.9	61%

Haplotypes Impacting Fertility.-Tested free
HH1T, HH2T, HH3T, HH4T, HH5T, HH6T.

PHYSICAL TRAIT EVALUATION.

PTAT: 0.70 UDC:0.50, FLC: -0.37 .

GENOMIC EVALUATION. JUNE 2020

GTPI: 2081. REL. 77 %

Trait	Value	Scale	STA	Value	Scale
Stature	Short		0.7	Tall	
Strength	Frail		1.24	Strong	
Body Depth	Shallow		1.17	Deep	
Dairy Form	Tight ribbed		1.02	Open Ribbed	
Rump Angle	High pins		-0.3	Sloped	
Rump Width	Narrow		0.78	Wide	
Rear Leg Side View	Posty		-0.3	Sickled	
Rear Leg Rear View	Hock-in		-0.2	Straight	
Foot Angle	Low angle		-0.7	Steep Angle	
Fore Udder Attachment	Loose		0.52	Strong	
Rear Udder Width	Narrow		0.99	Wide	
Rear Udder Height	Low		1.08	High	
Feet/Leg score	Low		-0.2	High	
Udder Cleft	Weak		0.2	Strong	
Udder Depth	Deep		0.17	Shallow	
Front Teat Placement	Wide		0.15	Close	
Teat Length	Short		-0.1	Long	
Rear Teat Placement	Wide		0.12	Close	

HOLSTEIN FRIESIAN

Salient MCGYVER SNOWMAN FR.4076
BORN: 20.06.19



REG. 25057 VOL.LXXXI
SIRE: S-S-I SNOWMAN
MCGYVER -ET
DAM: SALIENT KIRIMA
RIB-ET.
305D, 7,800 KgM
IN HER 1ST
LACTATION
MGS: CLEAR-ECHO
MARION RIB-ET

BREEDER:
MWEIGA ESTATE-LTD

YIELD AND HEALTH TRAITS

TPI	1804	77%
NET MERIT	-73	76%
PTAM	459	78%
PTAF	15	0.08%
PTAP	25	-0.06%
FEED EFF.	25	28%
DPR%	-1.3	74%
PL	0.6	75%
SCS	2.97	75%
HCR	-1.2	70%
CC Rate	-2.1	73%
FERTILITY IND	-1.2	74%

CALVING TRAITS

DCE	9.4	57%
SCE	7.2	59%

Haplotypes Impacting Fertility.-Tested free
HH1T, HH2T, HH3T, HH4T, HH5T, HH6T.

PHYSICAL TRAIT EVALUATION.		GENOMIC EVALUATION. JUNE 2020	
PTAT: -0.62 UDC:-0.39, FLC:-1.03 .		GTPI: 1804. REL. 76 %	
Stature	Short		STA -0.31 Tall
Strength	Frail		0.54 Strong
Body Depth	Shallow		0.16 Deep
Dairy Form	Tight ribbed		-1.37 Open Ribbed
Rump Angle	High pins		0.65 Sloped
Rump Width	Narrow		-0.53 Wide
Rear Leg Side View	Posty		-0.24 Sickled
Rear Leg Rear View	Hock-in		-0.8 Straight
Foot Angle	Low angle		-0.27 Steep Angle
Fore Udder Attachment	Loose		0.03 Strong
Rear Udder Width	Narrow		-0.96 Wide
Rear Udder Height	Low		-1.04 High
Feet/Leg score	Low		0.42 High
Udder Cleft	Weak		-0.23 Strong
Udder Depth	Deep		0.34 Shallow
Front Teat Placement	Wide		-0.07 Close
Teat Length	Short		0.2 Long
Rear Teat Placement	Wide		-0.34 Close

CODE NO. FR. 4020
NAME: MARIRU SANCHEZ MARK
K.S.B. NO.: PED. 20376 VOL. LXXII
DATE BORN: 15.05.2011

BREEDER: AMBONI DAIRY FARM



Mark dtr 1st
lact peaked
28 kgm.



Longivity at its best. A balance of production and type trait sire

SIRE: GEN-MARK STORMATIC SANCHEZ

PTA KgM 771 Kg F 51 Kg Prot. 9 Rel.% 99

Type: 3.0, 2.24 Udder, 2.8 Feet, 95% Rel.

Dtrs Av. 12,407 KgM, 3.6% F, 3.0% P

G.S: COMESTAR STORMATIC-ET

KgM 1773 Kg F 36 Kg Prot. 40 Rel.% 89

G.D: GEN-MARK BW MAR WINIE-ET

PTA KgM 1431 Kg F 6 Kg Prot. 23 Rel.% 89

Type: 1.03, 0.29 Udder, 1.27Feet, 87%Rel.

1st Lact. 12,659KgM, 3.6%F, 454KgF, 2.9%P, 313KgP

G.S: FUSTEAD EMORY BLITZ-ET

PTA KgM 2365 KgF 30 KgP 17 Rel. 99

Type: 2.03, 1.69 Udder, 1.48 Feet, 98% Rel.

In 3644 daughters and 1522 herds
Dtrs Av. 12,680KgM, 443KgF and 361KgP

DAM: MARIRU BLITZ WACHUKA

BVE: + 354 KgM

Produced 21,419 KgM in 3 lactations

Highest Lact. 3rd. 9,135 kg milk in 305days

G.D: MANERA DLT 01115 SUSIE

BVE: + 379 KgM

CODE NO. FR. 4035
NAME: BARAKA STILIST **IMPACT**
K.S.B. NO.: PED. 21670 VOL.LXXIV
DATE BORN: 10.12.12

BREEDER: BARAKA DAIRY FARM

An outcross sire with great productive life.



SIRE: DELTA STILIST

KgM	KgF	Kg Prot.	BF%	Prot.%	Rel%
134	15	11	0.25	0.19	99

In 19,498 dtrs, in 5542 herds.
 NVI= 8, INET= 73
 BVE:Type:98, udder: 101, FLC 100, Udder Health 95,

DAM: BARAKA LELMOKWO 121-700
 Produced 21,402KgM in 3 lactations of 30 days.
 Highest lactation: 3rd. at 7,355KgM in 305 days

G.S: DELTA NOVALIS

KgM	KgF	Kg	Prot.	BF%	Prot.%	Rel%
-162	16	1	0.11	0.08	99	

In 12,630 dtrs, in 6011 herds.
 NVI= 26, INET= 30
 BVE Type:95, udder: 101, FLC 95, Udder Health 102,

G.D: DELTA DEBBIE - ET

PTA	KgM	Kg F	Kg Prot.	Rel%
750	38	28	75	

Type: 2.80, 2.24 Udder, 2.59 Feet, 73% Rel
 Lact. 1: 9309 Kgm, 4.2% F, 3.3% P in 305 days

G.S: CARPS-PYR BASAR BRAD-ET

KgM	Kg F	Kg Prot.	Rel%
-125	12	2.3	99

Type: 0.15, -0.30 Udder, 0.99 Feet, 3.07 SCS with 99 Rel
 in 9978 daughters and 1919 herds
 Dtrs Av. 11,847 Kgm, 446 KgF, 361 KgP in 305 days

G.D: LELMOKWO 12-563
 Produced 17,443 KgM in 3 lactations of 305 days.
 Highest lactation: 3rd at 6,725KgM in 305 days

CODE NO. FR. 4040
NAME: MARIRU SUPER **MONARCH**
K.S.B. NO.: PED. 21652 VOL.LXXIV
DATE BORN: 27.06.13

BREEDER: AMBONI DAIRY FARM

*A red factor carrier (RF) with a proven pedigree for production.
 Daughters' average 38Kg per day*



SIRE: CHARLESDALE SUPERSTITION - ET

PTA	KgM	Kg F	Kg P.	Rel.%
503	4	13	99	

Type: 0.79, Udder 0.93 Feet 0.23, 99% Rel
 TPI.2042. SCS.2.74.

DAM: MARIRU MELLISSA
 Produced 22,006 KgM in 3 lactations of 305 days.
 Highest lactation: 3rd. at 8,400KgM in 305 days

G.S: END-ROAD PVF BOLIVER

PTA	KgM	Kg F	Kg Prot.	Rel.%
1234	58	34	99	

Type: 2.77, 2.03 Udder, 1.88 Feet, 99% Rel.
 DTS Av. 12,535 Kgm, 464 KgF, 3.70% BF, 384 KgP, 3.10%P

G.D: CHARLESDALE SWEET STAR
 Lact. 1: 12,815 Kgm, 3.3%F, 3.1%P in 305 days

G.S: VEAZLAND MARION- ET

KgM	KgF	KgProt.	Rel%
2011	52	51	99

Type: 2.62, 1.34 Udder, 2.11 Feet with 99% Rel
 in 89 daughters ad 57 herds.
 Dtrs Av. 11,939Kgm, 431KgF, 350KgP in 305 days

G.D: MARIRU GLADYS TOUCH.
 Produced 19,476 KgM in 3 lactations of 305 days.
 Highest lactation: 3rd. at 6,966 KgM in 305 days

CODE NO. FR. 4042
NAME: SALIENT SCRIBE DAVID
K.S.B. NO.: PED. 21673 VOL.LXXIV
DATE BORN: 30.06.13



BREEDER: MWEIGA DAIRY FARM

SIRE: ZIMMERVIEW BLITZ JINTX-ET

PTA KgM	Kg F	Kg Prot.	Rel.%
2000	48	29	98

Type: 0.43, 0.73 Udder, 0.82Feet, 2.95 SCS, 94% Rel
 Dtrs. AV. 12,435 KgM, 3.6%F, 2.9%P in 305 73 days.

G.S: FUSTEAD EMORY BLITZ-ET

PTA KgM	Kg F	Kg Prot.	Rel.%
1867	16	8	99

Type: 1.41, 1.25 Udder, 0.94Feet, 3.04 SCS, 99%Rel.

G.D: ZIMMERVIEW WNCHSTR JENA -ET

PTA KgM	Kg F	Kg Prot.	Rel.%
87	21	10	92

Type:- 0.06, 0.73 Udder, 0.10Feet, 3.11 SCS, 89%Rel
 Lact.1: 12,168 KgM, 4.2 %F, 3.5%P in 305 days.

DAM: SALIENT TERESA SCRIBE 1315

Produced 18,934KgM in 3 lactations of 305 days.
 Highest lactation: 3rd at 6,784KgM in 305 days

G.S: B-Y-U SCRIBE-ET

KgM	Kg F	Kg Prot.	Rel%
2403	56	66	88

Type: 0.43, 0.27 Udder, -0.41 Feet, 3.22 SCS, with
 99% in 104 daughters in 77 herds. TPI: 1439

G.D: SALIENT TERESA LANGS.1062

BVE: 57 KgM
 Av. Production was 6899 KgM in 305 days.

CODE NO. FR. 4043
NAME: SASUMUA ATOTI SHOWTIME
K.S.B. NO.: PED. 21677 VOL.LXXIV
DATE BORN: 02.07.13



BREEDER: KENANA FARM

A type trait bull with rich pedigree for production.

SIRE: KRULL SHOTTLE - EATON-ET

PTA KgM	Kg F	Kg Prot.	Rel.%
1350	17	24	90

Type: 1.11, 0.84 Udder, 0.87 Feet, 2.71 SCS, 87% Rel
 DTR/AV. 12,082 KgM, 3.6%F, 3.0%P, in 305 days.

G.S: PICSTON SHOTTLE-ET

PTA KgM	Kg F	Kg Prot.	Rel.%
1234	58	34	99

Type: 2.77, Udder 2.13, Feet 1.90, SCS 2.67, 99% Rel.

G.D: KRULL THRONE EUGINA-ET

PTA KgM	Kg F	Kg Prot.	Rel.%
638	-6	17	75

Type: 1.58, Udder 0.96 , Feet 1.90, SCS 2.74, 81%Rel
 Lact. 1: 11,240KgM, 3.4%F, 3.3%P in 305 days.

DAM: K8455 SASUMUA ATOTI

Produced 30,290KgM in 5 lactations of 305 days.
 Highest lactation: 3rd. at 7,581KgM in 305 days:

G.S: DONNANDALE MAGNET

KgM	Kg F	Kg Prot.	Rel%
-161	16	-14	99

In 1130 dtrs, in 761 herds.
 Type 2, SCS 3.24, with 96% Rel.
 GLPI: 1579

G.D: K8132 SASUMUA SAFFRON

Produced 6,007 KgM in 1st. lactation of 305 days.
 Sold in second Lactation.

CODE NO. FR. 4051
NAME: BARAKA MORAZAN **EQUITY**
K.S.B. NO.: PED. 22584 VOL.LXXXVI
DATE BORN: 16.02.14



An outcross sire with tremendous strength

BREEDER: BARAKA DAIRY FARM

SIRE: DELTA MORAZAN

KgM	Kg F	Kg Prot.	%F	%P	Rel. %
770	-2	31	-0.38	- 0.17	99

Type 108, Udder,112,FL 99, SCS 99
 NVI= 72, INET= 132 in 1446 dtrs in 679 herds

G.S: DELTA OLYMPIC

KgM	Kg F	Kg Prot.	%F	%P	Rel. %
803	3	19	-0.34	- 0.10	99

Type 102, Udder,100,FL 99, SCS 100
 NVI =3, INET= 95 in 88,359 daughters in 12,584 herds.

G.D: BUITENEIND PIEN

PTA KgM	Kg F	Kg Prot.	Rel.%
750	38	28	75%

Type: 2.80, 2.24 Udder, 2.59Feet, 73%Rel
 Lact. 1: 9309Kgm, 4.2%F, 3.3%P in 305 days

DAM: BARAKA RUTH 22-577

EBV: 268.6 KG MILK
 Produced 32,991KgM in 5 lactations of 305 days.
 Highest lactation: 3rd at 8,362KgM in 305 days

G.S: SHOREMAR JAMES

KgM	Kg F	Kg Prot.	Rel%
1314	67	60	89

SCS 2.96with 99% Rel in 72 daughters ad 72 herds
 LPI:1710

G.D: BARAKA RUTH 2-385

Produced 22,686 KgM in 4 lactations of 305 days.
 Highest lactation: 4th. at 6,794 KgM in 305 days

OTHER FRIESIAN BULLS WITH SEMEN IN STOCK

No.	Code	Name	Sire	Dam	MG Sire
1	309	Nyara Canasta	Knolltop	Nyara Norma	Ironside Alpha
2	385	Sasumua Olympus	Maughlin Storm	Sasumua Olympia	Paradise R.Cleitus Mathie
3	388	Gicheha Jacob	J.L.G. Glandslam E.T.	Gicheha.7GA 067	Kebenei 85th
4	392	Sasumua Lad	J.L.G. Glandslam E.T.	Sasumua Lady	To-Mar Blackstar Gallent
5	394	Nyara Helena Allen	Canyon-Breeze Allen	Helena 2nd.	Havep-Formulae 1
6	400	Mariru Thomas	O-Bee Manfred Justice	Mariru Blitz Olivia	Fustead Emory Blitz
7	4009	Salient Lyric Agenda	Mar River Bw Marshal Lyric	Lowena Langs	Langs Twin La Elm Dandy
8	4010	Salient Charlie	Delta Onedin	Blossom Corky	Wells Mascot Corky
9	4011	Tujenge Allegro Mambo	Canyon-Breeze Allegro	TJ. 511225	O-Bee Manfred Justice
10	4014	Tujenge Louis	Desting - Mrsh Lou-ET	TJ 21115	Veazland Rotate Delight
11	4015	Sasumua Taurus	Delta Paramount	K8193 Tapiti	Sasumua Haven

HOLSTEIN FRIESIAN

No.	Code	Name	Sire	Dam	MG Sire
12	4016	Sasumua Agricola	Newhouse Ricky	Sasumua Asika	Donnandale Magnet
13	4017	Salient Spark	Quickland Kilomarks E.T	Sparky 1221	Fritzland Shenval Spanky-ET
14	4019	Mariru Dave	Ensenada Taboo Planet	Mariru Sosa Ngina	Rich-J-Sosa - ET
15	4022	Sasumua Simon	Horst Harry	Sasumua Salome	Hunsberger Elton Copper
16	4023	Salient Tully	Ensenanda Champion Pat-ET	Sero Tully 1114	Tully Paradise-R Int Tully-ET
17	4026	Salient Champion	Ensenanda Champion Pat-ET	Dururu Lingo 948	Lingo
18	4027	Mariru Kigera	England-Amm On Million - E.T.	Mariru Score Roda	Score
19	4028	Mariru Jomoh	Mr. Regelcreek Shot Alan-ET	Mariru Marshal Mara	Mara-Thon-Bw Marshal
20	4029	Deneside Access	Robthom Oslo Marshal	Manera Theo- 4021	Hartline Aerostar Theo
21	4030	Tujenge Easy	Willow-Marsh-Cc Gabor -ET	Tj. 712-278	Veazland Marion
22	4033	Luchans Balozi	Sandy-Valley Bolton-ET	Ex-Nyara Sally 62	Kenjo Prescott
23	4036	Emory Paramount	Delta Paramount	Kihumba Emory	MJR Blackstar Emory
24	4037	Deneside Aspire	Gran-J Canyon Monday-ET	Den 3050	Cymbidium Benchmark 1
25	4048	Bori Ricky	Newhouse Ricky	Ngunja 23rd. 5 ZR 16	Bori Beachnut Emory 1st.
26	4052	Nyara Magnet	Comestar Lauthority	Nyara Sally 69	Marpar Jabot Bruce-ET

CODE NO. AY.183
NAME: LORUKU HELIGO
C. SCORE: VG. 87
K.S.B. NO.: PED. 12807 VOL. LXX
DATE BORN: 14.05.08



A balanced dairy improver sire with excellent production and type

BREEDER: LORUKU DAIRY FARM



Heligo dtr that peaked at 33 kg per day

SIRE: BONNIE BRAE HELIGO

KgM	Kg F	%F	KgP	%P	Rel%
1018	33	-0.08	21	-019	99%

In 3063 daughters, in 519 herds.

G.S: ST. MARTIN INTENSE 16K. GP.

KgM	KgF	%F	KgP	%P	Rel.
605	26	0.12	15	0.05	

G.D: SUNNY HILL ST. NICK'S HELEN

Lact.	KgM	B.F.%	KgF	Prot.	KgP	Days
7	9725	4.1	394	3.4	329	305

DAM: LORUKU HARRY 1328 VG 87
 Produced 41,597 kgm in 6 lactations
 Highest Lactation 5th. 7368 kg in 305 days.

G.S: ST. MARTIN INTENSE 16K. GP.

KgM	KgF	%F	KgP	%P	Rel.
605	26	0.12	15	0.05	

G.D: HANNA 1155
 Produced 21,578 KgM in 7 lactations.
 Highest Lactation: 6th. at 3,910 kgM in 305 days

PHYSICAL TRAIT EVALUATION. DAUGHTER LINEAR CLASSIFICATION. AUGUST 2018.		IN 27 DAUGHTERS IN 6 HERDS	
PTAT: 0.81	UDC: 0.85, FLC: 0.4.		
Stature	Short		STA
Strength	Frail		0.8 Tall
Body Depth	Shallow		0.8 Strong
Dairy Form	Tight ribbed		1.2 Deep
Rump Angle	High pins		0.8 Open Ribbed
Rump Width	Narrow		0.8 Sloped
Rear Leg Side View	Posty		0.8 Wide
Rear Leg Rear View	Hock-in		1.2 Sickled
Foot Angle	Low angle		1.2 Straight
Fore Udder Attachment	Loose		0.4 Steep Angle
Rear Udder Height	Low		1.2 Strong
Feet/Leg score	Low		1.2 High
Udder Cleft	Weak		0.4 High
Udder Depth	Deep		1.2 Strong
Front Teat Placement	Wide		1.2 Shallow
Teat Length	Short		0 Close
Rear Teat Placement	Wide		0.4 Long
			1.2 Close

CODE NO. AY. 2006
NAME: MAAKIOU ORKKO **COFFEE**
K.S.B. NO.: PED/13572-LXXIII
DATE BORN: 24.06.2011

BREEDER: MAAKIOU FARM



Coffee dtr. that peaked at 28 Kg per day in 2nd lactation.



Longivity at its best.

SIRE: PUROLAN ORKKO

Breeding Value Indices

KgM	KgF	Fat%	KgP	Prot.%	P.Index	Rel.%
98	97	98	105	110	104	99

In 11,925 daughters. NTM 410

G.S: GADDNASS ESKIL 39520

KgM	KgF	Fat%	KgP	P%	P.Index
103	95	90	102	97	100

In 1233 daughters.

G.D: LELU 1180473

Best Lact. 11,354 KgM, 4.0%F, 3.3%P in 305 days

DAM: MAAKIOU MUTHITHI II (447)

BVE: + 39.63KgM

Produced 19,237KgM in 4 lactations.

Highest Lactation 4th. 5,958 kgM in 305 days

G.S: COVEY-FARMS RENO

PTAM(KG)	PTAF% FAT(Kg)	PROT(KG)	REL%
+718	+48	+45	69

G.D: MAAKIOU MUTHITHI

CODE NO. AY. 2020
NAME: LORUKU HIPPO **URKA**
K.S.B. NO.: PED/14018 VOL. LXXIV
DATE BORN: 24.12.2012

BREEDER: ADC KATUKE



An outcross sire with outstanding dairyness.

SIRE: SAUKKONIEMEN URKA FAY 44102

Estimated Breeding Value

KgM	BF%	P%	Rel. %
121	73	90	99

In 734 dtrs.

Udder health 101, daughter Fert.95,

Feet and legs 110 , Udder 103.

Prod. Index 111

NTM +14

G.S.: ASMO OHITUS-ET FAY 41333

PTAM	PTAF	PTAP	REL.
1325	21	+44	62

217 dtrs in 210 herds

S.C.S 2.87

G.D.: SAUKKONIEMEN SIRU

DAM: LORUKU HIPPO 1470

Produced 21,011KgM in 3 lactations.

Highest was 2ND. at 7,556 kgM in 305 days

G.S: MARDEL VOLAGE E.T

KgM	KgF	%F Kg	Prot.	%P	Rel.%
518	14	-0.08	30	0.18	97

In 322 daughters, in 164 herds.

Dtrs av. 8,333 KgM, 325 KgF, 287 KgP.

G.D.: HILDA 1361

Produced 4,771KgM in 305 days in her first lactation.

CODE NO. AY. 2021
NAME: MAAKIOU JEREMMY
K.S.B. NO.: 14069 VOL. LXXV
DATE BORN: 01. 08. 2013



BREEDER: MAAKIOU DAIRY FARM

SIRE :KILPISALON TOIVO FAY 43545
 Estimated Breeding Value
 KgM BF% P% Rel. %
 15 99 98 99
 Daughters are 4573
 Udder health 110, daughter Fert.98,
 Prod. Index 115. Feets 116, Udder 105

G.S.: TRISEVAN MIQUR AAA 40893
 Estimated Breeding Value
 KgM KgF KgP Rel %
 106 91 100 99

GD: LOISTO

DAM: DANIX KASTOO
 Produced 8,933KgM in 2 lactations.
 Highest was 2ND. at 5,831 kgM in 305 days

G.S.:ADC LANET STOO (AY. 137)
 KgM KgF KgP Rel %
 44 59 48 35

G.D.:KARAU 4TH
 Produced 18,623KgM in 4 lactations.
 Highest was 4th .at 4,988 KgM in 305 days

CODE NO. AY. 2022
NAME: ADC GALLEYLANE TUKIO
K.S.B. NO.: 14070 VOL. LXXV
DATE BORN: 15. 08.2013



BREEDER: ADC KATUKE



Tukio dtr. that peaked at 25kg per day in 1st lactation

SIRE :KILPISALON TOIVO FAY 43545
 Estimated Breeding Value
 KgM BF% P% Rel. %
 115 99 98 99
 Daughters are 4573
 Udder health 110, daughter Fert.98,
 Prod. Index 115. Feets 116, Udder 105

G.S.: TRISEVAN MIQUR AAA 40893
 Estimated Breeding Value
 KgM KgF KgP Rel %
 106 91 100 99

GD: LOISTO

DAM: NUSUKILO 4GZ 166
 Produced 17,655KgM in 4 lactations.
 Highest was 4TH.. at 5,266 kgM in 305 days

G.S.: GATURU JUNIOR (AY.152)
 PTAM KgF KgP REL%
 278 13 9 76

G.D.: ADC GALLEY LANE NUSUKILO OGZ09
 Produced 13,452KgM in 4 lactations.
 Highest was 3rd.. at 4,896 kgM in 305 days

CODE NO. AY. 2024
NAME: MAAKIOU SUDAN **CARAVAN**
K.S.B. NO.: 14072 VOL. LXXV
DATE BORN: 22.12.2013



BREEDER:
 MAAKIOU
 ESTATE LTD.

Caravan dtr. that peaked
 at 30 Kg per day



An udder improver sire with tremendous depth.

SIRE: KILPISALON TOIVO FAY 43545
 Estimated Breeding Value

KgM	BF%	P%	Rel. %
115	99	98	99

 Daughters are 4573
 Udder health 110, daughter Fert.98,
 Prod. Index 115. Feets 116, Udder 105
 NTM +17

DAM: SUDAN IV
 Produced 17,184KgM in 3 lactations.
 Highest was 3rd. at 6,638 kgM in 305 days

G.S.: TRISEVAN MIQUR AAA 40893
 Estimated Breeding Value

KgM	KgF	KgP	Rel %
106	91	100	99

GD.: LOISTO

G.S.: B. UMA`S RENO

PTAM	KgF	KgP	REL%
359	24	22	35

G.D.: SUDAN 3
 Produced 14,452KgM in 4 lactations.
 Highest was 3rd.. at 4,906 kgM in 305 days

CODE NO. AY. 2025
NAME: LORUKU **OBLICK**
K.S.B. NO.: 14073 VOL. LXXV
DATE BORN: 01.01.14

BREEDER: LORUKU DAIRY FARM



SIRE:JELYCA OBLIQUE
 Estimated Breeding Value

KgM	KgF	Fat%	KgP	Prot. %	Rel.
404	39	0.29	17	0.04	99

 1716 daughters, in 315 herds.
 GLPI 2749
 Overall conformation rating 7
 SCS. 2.98G With 76% Rel.

DAM: LORUKU OLEONDO 1437
 Produced 47,590kgM in 7 lactations.
 Highest was on 4th lactation at 7,958kgM in 305 days

G.S.KILDARE TORNADE S-ET
 Estimated Breeding Value

KgM	KgF	Fat%	KgP	Prot.%	Rel. %
334	17	0.42	-6	0.08	95

 115 daughters in 80 herds GLPI 2360
 Overall conformation index of -3 .
 SCS: 2.69 with 93% Rel.

G.D. DELA CAVEE SYLV SUPRA-ET
 Estimated Breeding Value

KgM	KgF	Fat%	KgP	Prot. %	Rel. %
186	0	-0.10	2	-0.04	86

 Daughters / sons 6/2 Conformation index is 7.
 SCS: of 3.27G with 76% Rel.

G.S.: COVEY- FARMS WILLY RECHARGER
 Estimated Breeding Value

KgM	KgF	Fat%	KgP	Prot. %	Rel. %
6	-25	5%	-10	-0.13	79

 24 daughters in 12 herds
 Overall conformation rating -4 .
 SCS: of 3.46 with 70% REL.

G.D.: OLEANDA 1189
 Produced 50,585 kgM in 12 lactations.
 Highest was on 10th lactation at 5,698 kgM in 273 days

CODE NO. AY. 2026
NAME: ADC LANET PEACE
K.S.B. NO.: 14379 VOL. LXXVI
DATE BORN: 21.02.14

BREEDER: ADC LANET



SIRE: ASMO ULLIMULLI FAY.44033
 Estimated Breeding Value

KgM	BF%	P%	Rel. %
110	97	95	96

 Daughters are 187
 Udder health 105, daughter Fert.112,
 Prod. Index 107. Feets, 110, Udder 109 NTM +20

DAM: TAMBA 4TH. 3LT 13
 EBV. 75 KgM
 Produced 18,747KgM in 5 lactations.
 Highest was 5th. at 4,451 KgM in 305 days

G.S.: LINDERO 45318
 Estimated Breeding value

KgM	KgF	KgP
926	58	40

 In 73 daughters, in 58 herds with 87% Rel.
 Daus. Av. 8446 KgM, 4.14%BF, 3.45%Prot.

G.D.: ORAKKEL-ET

G.D.: GOGAR ONTARIO. (AY.146)

PTAM	KgF	KgP	REL
317	17	17	35

G.D.: TAMBA 8 LT 1
 Produced 15,862 KgM in 4 lactations.
 Highest was 4TH. at 4,189 kgM in 305 days

CODE NO. AY. 2027
NAME: ADC LANET TIGER
K.S.B. NO.: 14379 VOL. LXXVI
DATE BORN: 01.04. 2014

BREEDER: ADC LANET



A production improver sire. Dtr avarege 28Kg per day

SIRE: KAMOURASKA MANDARIN
 Estimated Breeding Value

KgM	KgF	Fat%	KgP	Prot. %	Rel. %
543	28	0.08	25	0.09	97

 191 daughters in 112 herds.
 GLPI 2537
 Overall conformation rating 5 .
 SCS. 2.92G with 94% Rel.

G.S.:VISSERDALE DILLIGENT-ET S
 Estimated Breeding Value

KgM	KgF	Fat%	KgP	Prot.%	Rel.%
47	17	0.20	11	0.12	98

 553 daughters in 247 herds.
 GLPI 1918. Overall conformation rating 1
 SCS. 3.06G with 98% Rel.

G.D.: KAMOURASKA JERRY VIRVANA
 Estimated Breeding Value

KgM	KgF	Fat%	KgP	Prot.%	Rel.%
388	42	0.37	21	0.13	90

 GLPI 2667 Overall conformation rating 7.
 SCS. 2.82G with 84% Rel.

DAM:REWARD 5 LT 44
 Produced 17,116 KgM in 4 lactations of 305 days.
 Highest was on 3rd lact. at 5091kgM in 305 days

G.S.: MUHUGU GOODBOY. (AY.148)

PTAM	PTAF%.	REL.%.
17	0.01	35

G.D. :REWARD 5 LT 58
 Produced 16,862KgM in 4 lactations.
 Highest was 4th. at 4,987 kgM in 305 days

CODE NO. AY. 2029
NAME: LORUKU PROJECT
K.S.B. NO.: 14373 VOL. LXXVI
DATE BORN: 03 .07. 2014

BREEDER: LORUKU LTD.



Half sister to Project

SIRE: HAUTPRE KANSAS- ET

Estimated Breeding Value
 KgM KgF Fat% KgP Prot. % Rel. %
 641 54 0.35 34 0.16 98
 459 daughters in 169 herds. GLPI 2727
 Over all conformation rating -2.
 SCS. 2.63G with 97% Rel.

DAM: LORUKU HEIFA 1563

Produced 26,151kgM in 4 lactations
 Highest on 3rd lact. at 8,035kgM IN 305 days



G.S. PETERSLUND

Estimated Breeding Value
 KgM KgF Fat% KgP Prot % Rel.%
 922 63 0.33 53 0.27 99
 489 daughters in 144 herds. GLPI 2957
 Over all conformation rating -6 .
 SCS. 2.84G with 99% Rel. SCS. 2.84G with 99% Rel.

G.D. HAUTPRE PARDNER KORANE

Estimated Breeding Value
 KgM KgF Fat% KgP Prot.% Rel.%
 388 42 0.37 21 0.13 90
 Daughter/sons 17/1 GLPI 2667
 Over all conformation rating 7. SCS. 2.82G with 84%

G.S.: BIRGDALE COPPER

KgM KgF KgP Rel.%
 +850 +22 +16 91
 89 daughters in 76 herds.

GD: LORUKU HIPPO 1470

Produced 21,011 kgM in 3 lactations
 Highest on 2nd lact. at 7,556kgM in 305

CODE NO. AY. 2030
NAME: LORUKU LYKE
K.S.B. NO.: 14372 VOL. LXXVI
DATE BORN: 18 .10. 2014

BREEDER: LORUKU LTD



An outcross sire.

SIRE PUROPELLON YLLYKE

Estimated Breeding Value
 KgM KgF KgP Rel. %
 105 115 112 99
 Daughters are 1882
 Udder health 94, daughter Fert.100
 Prod. Index 114 NTM +10

DAM LORUKU HONDA

Produced 23,981kgM in 4 lactations
 Highest on 4th. lact. at 6,648kgM in 305 days

G.S.NIEMELAN OOPPIUM

Estimated Breeding Value
 KgM KgF KgP Rel. %
 100 107 101 99
 Daughters are 9,126
 Udder health 109, daughter Fert.82
 Prod. Index 104 NTM +0

G.D.:SERENADI

G.D.: LABRIE CHARLOT_ET (73AY 0423)

PTAM BF% KgF P% KgP REL%
 376 -0.06 9 -0.01 10.9 92
 In 1141 dtrs, 753 herds.
 SCS 2.63, GTPI. 428

G.D.: LORUKU HATTIE 1224

Produced 33,654kgM in 7 lactations
 Highest on 6th. lact. at 6,957kgM in 305 days

CODE NO. AY. 2031
NAME: LORUKU NANDOS
K.S.B. NO.: 14374 VOL. LXXVI
DATE BORN: 09 .01. 2015



BREEDER: LORUK DAIRY FARM

An outcross sire with a high parental average.

SIRE:PUROPELLON YLLYKE
 Estimated Breeding Value

KgM	KgF	KgP	Rel. %
105	115	112	99

 Daughters are 1882
 Udder health 94, daughter Fert.100
 Prod. Index 114 NTM +10

G.S.: NIEMELAN OOPPIUM
 Estimated Breeding Value

KgM	KgF	KgP	Rel. %
100	107	101	99

 Daughters are 9,126
 Udder health 109, daughter Fert.82
 Prod. Index 104 NTM +0

DAM:LORUKU NAIVASHA 1617
 Produced 26,798kgM in 4 lactations
 Highest on 2nd lact.at 8,253 kgM IN 305 days

G.D.: SERENADI
G.S.: VISSERDALE ETRO

KgM	Kg F	%F	KgP.	%P	Rel.%
1325	47	-0.08	61	0.21	91%

 In 94 daughters, in 71 herds.
 Dau.Av. 8793 with 343 KGF with 304KGP
 Lifetime Profit Index: 1870

G.D.: NAIVASHA 1498
 Produced 19,780kgM in 4 lactations
 Highest on 2nd lact.at 7,892kgM in 305 days

CODE NO. AY. 2032
NAME: ELDOPOLY MANDARIN SAWE
K.S.B. NO.: PED/14394-LXXVI
DATE BORN: 16 .03. 2015



BREEDER: ELDORET POLYTECHNIC

SIRE KAMOURASKA MANDARIN
 Estimated Breeding Value

KgM	KgF	Fat%	KgP	Prot. %	Rel. %
543	28	0.08	25	0.09	97

 191 daughters in 112 herds.
 GLPI 2537
 Overall conformation rating 5
 SCS. 2.92G with 94% Rel.

G.S.VISSERDALE DILLIGENT
 Estimated Breeding Value

KgM	KgF	Fat%	KgP	Prot. %	Rel. %
47	17	0.20	11	0.12	98

 553 daughters in 247 herds. GLPI 1918
 Overall conformation rating 1 with 46%
 SCS. 3.06G with 98% Rel.

G.D.: KAMOURASKA JERRY VIRVANA
 Estimated Breeding Value

KgM	KgF	Fat%	KgP	Prot. %	Rel. %
388	42	0.37	21	0.13	90

 Daughter/sons 17/1 GLPI 2667
 Overall conformation rating 7. SCS. 2.82G

DAM: ELDOPOLY ELLI 67
 Estimated Breeding Value
 31 Kg Milk with 67% Rel
 Produced 8,011kgM in 2 lactations
 Highest on 2nd lact.at 4419kgM in 305 days

G.S. MARDEL VOLAGE -ET
 Breeding Value Indices

PTAM(KG)	PTAF%	F(Kg)	P(KG)	%P	REL%
518	-0.08	14	30	+0.18	97

 In 322 dtrs in 164 herds.
 Dtrs Av. 8333 kgM, 325kgP and 287 kgP

G.D.: ELDOPOLY ELLI 42
 Ebv of 32 KGm in 69% Rel.
 Produced 13,994KGm I in 3 lactations.
 Highest was 3rd lact, at 5,100kgM in 305 days.

CODE NO. AY. 2033
NAME: ADC GALLEYLANE NEPAL
K.S.B.NO.: 14395 VOL. LXXVI
DATE BORN: 31.10.2014

BREEDER: ADC KATUKE



SIRE: PA HILL JULLI NIGEL-ET
 Breeding Values

KgM	KgF	Fat%	KgP	Prot.%	Rel. %
353	23	4.9	15	3.8	98

 Daughters are 1924
 Overall conformation of 0.35 with 96%
 Somatic cell BW. -0.20 with 99%
 Overall Breeding worth. 52

G.S: HIRVIVAINION JULII
 Breeding Values

KgM	KgF	Fat%	KgP	Prot.%	Rel. %
655	14	4.4	17	3.6	99

 Somatic cell BW. -0.16 with 99%
 Overall Breeding worth. 50

G.D: MOSELEY AJ NOLL
 Breeding Values

KgM	KgF	KgP	Rel. %
372	9	7	72

 Average 10 lact. 4597kgM x 3.60%P and 4.69%F
 Best was. 5724 KgM x 3.71% P, 4.73% F in 305 days.
 Overall Breeding worth. 62

DAM: ADC GALLEYLANE JANE 5 GZ 116
 Produced 17,081 kgM in 5 lactations.
 Highest at 2nd. lact. at 3943kgM in 305 days.

G.S: MADARAKA T. SABAKI. (AY.156)

PTAM	KgF	KgP	REL%
359	17	17	35

G.D: ADC GALLEYLANE. JANE 6 GZ 169

CODE NO. AY. 2034
NAME: ADC GALLEYLANE CHALLENGER
K.S.B. NO.: PED/14396-LXXXVI
DATE BORN: 04.12.2014

BREEDER: ADC KATUKE



SIRE: KILFENNAN CHALLENGE
 Breeding Values

KgM	KgF	Fat%	KgP	Prot. %	Rel. %
150	14	0.1	11	0.1	99

 In 11686 Daughters
 Overall conformation of 0.05
 SCC. 0

G.S: BACKGARD 3082
 Breeding Values

KgM	KgF	Fat%	KgP	Prot. %	Rel. %
-9	4	4.3	-6	3.6	98

 SCC. -0.82 BW 49

G.D: KILFENNAN COCO
 Average 13 lact. 5435kgM x 3.67%P and 4.57%F
 in 275 days
 Overall Breeding worth. 3

DAM: ADC GALLEYLANE MOROTO 7 GZ 084
 Produced 17,001 kgM in 5 lactations.
 Highest at 2nd. lact. at 3943kgM in 305

G.D: MADARAKA T. SABAKI. (AY. 156)

PTAM	KgF	KgP	REL%
359	17	17	35

G.D: ADC GALLEYLANE MOROTO 4GZ 202

CODE NO. AY. 2036
NAME: MAKONGI NAIVASOLE
K.S.B. NO.: 14398 VOL. LXXVI
DATE BORN: 28. 05. 2015

BREEDER: MAKONGI FARM

A high fertility sire.



SIRE: VR SORBY SOLERO
 Estimated Breeding Value
 KgM KgF KgP Rel. %
 113 109 104 99
 Daughters are 2190,
 Udder health 92, daughter Fert.90, feet and
 legs 102
 Prod. Index 109 NTM +19

G.S: 91716 SORBY
 KgM KgF KgP
 1401 23 43
 EBV; 114 Milk, 102 F, 112 prot.
 Yield index. 108 with 99% Rel.

G.D: 460 BLOMMA
 Lact. KgM B.F.% KgF Prot.% KgP Days
 1 8997 4.4 398 3.6 314 305
 Overall Breeding worth. 3

DAM MAKONGI NAIVASHA-D11
 Produced 18,154 kgM in 5 lactations.
 Highest was 5th. lact. at 4,544kgM in 305 days

G.D: MUHUGU GOODBOY AY.148
 PTAM PTAF% REL%
 17 0.01 35

G.D: MAKONGI A 17

CODE NO. AY. 2037
NAME: MAAKIOU NIGELA
K.S.B.NO.: 14399 VOL. LXXVI
DATE BORN: 29. 05. 2015

BREEDER: MAAKIOU DAIRY FARM



Nigela dtr. that peaked at 33kg per day



SIRE: PA HILL JULLI NIGEL-ET
 Estimated Breeding Values
 KgM KgF Fat% KgP Prot.% Rel. %
 353 23 4.9 15 3.8 98
 Daughters are 1924
 Overall conformation of 0.35 with 96%
 Somatic cell BW. -0.20 with 99%
 Overall Breeding worth. 52

G.S: HIRVIVAINION JULII
 Breeding Values
 KgM KgF Fat% KgP Prot.% Rel. %
 655 14 4.4 17 3.6 99
 Somatic cell BW. -0.16 with 99%
 Overall Breeding worth. 50

G.D: MOSELEY AJ NOLL
 Breeding Values
 KgM KgF KgP Rel. %
 372 9 7 72
 Average 10 lact. 4597kgM x 3.60%P and 4.69%F
 Best was. 5724 KgM x 3.71% P, 4.73% F in
 305 days.
 Overall Breeding worth. 62

DAM: MAAKIOU NINA 3RD.
 Produced 17,005 kgM in 3 lactations.
 Highest was 3rd. lact. at 6,980kgM in 305 days.

G.S: VISSERDALE SWEDMARK-ET
 PTAM(KG) PTAF% FAT(Kg) PROT (KG) REL%
 498 0.02 24 21 0.03 94
 Ptat: 0.40, Scs 3.27. in 211 dtrs, in 119 herds.

G.D.NINA 2ND 569

CODE NO. AY. 2033
NAME: ADC GALLEYLANE NEPAL
K.S.B.NO.: 14395 VOL. LXXVI
DATE BORN: 31. 10. 2014



BREEDER: ADC KATUKE

SIRE: PA HILL JULLI NIGEL-ET
 Breeding Values

KgM	KgF	Fat%	KgP	Prot. %	Rel. %
353	23	4.9	15	3.8	98

 Daughters are 1924
 Overall conformation of 0.35 with 96%
 Somatic cell BW. -0.20 with 99%
 Overall Breeding worth. 52

G.S: HIRVIVAINION JULII
 Breeding Values

KgM	KgF	Fat%	KgP	Prot. %	Rel. %
655	14	4.4	17	3.6	99

 Somatic cell BW. -0.16 with 99%
 Overall Breeding worth. 50

G.D: MOSELEY AJ NOLL
 Breeding Values

KgM	KgF	KgP	Rel. %
372	9	7	72

 Average 10 lact. 4597kgM x 3.60%P and 4.69%F
 Best was. 5724 KgM x 3.71% P, 4.73% F in 305 days.
 Overall Breeding worth. 62

DAM: ADC GALLEYLANE JANE 5 GZ 116
 Produced 17,081 kgM in 5 lactations.
 Highest at 2nd. lact. at 3943kgM in 305 days.

G.S: MADARAKA T. SABAKI. (AY.156)

PTAM	KgF	KgP	REL%
359	17	17	35

G.D: ADC GALLEYLANE. JANE 6 GZ 169

CODE NO. AY. 2034
NAME: ADC GALLEYLANE CHALLENGER
K.S.B. NO.: PED/14396-LXXXVI
DATE BORN: 04. 12. 2014



BREEDER: ADC KATUKE

SIRE: KILFENNAN CHALLENGE
 Breeding Values

KgM	KgF	Fat%	KgP	Prot. %	Rel. %
150	14	0.1	11	0.1	99

 In 11686 Daughters
 Overall conformation of 0.05
 SCC. 0

G.S: BACKGARD 3082
 Breeding Values

KgM	KgF	Fat%	KgP	Prot. %	Rel. %
-9	4	4.3	-6	3.6	98

 SCC. -0.82 BW 49

G.D: KILFENNAN COCO
 Average 13 lact. 5435kgM x 3.67%P and 4.57%F
 in 275 days
 Overall Breeding worth. 3

DAM: ADC GALLEYLANE MOROTO 7 GZ 084
 Produced 17,001 kgM in 5 lactations.
 Highest at 2nd. lact. at 3943kgM in 305

G.D: MADARAKA T. SABAKI. (AY. 156)

PTAM	KgF	KgP	REL%
359	17	17	35

G.D: ADC GALLEYLANE MOROTO 4GZ 202

CODE NO. AY. 2036
NAME: MAKONGI NAIVASOLE
K.S.B. NO.: 14398 VOL. LXXVI
DATE BORN: 28. 05. 2015

BREEDER: MAKONGI FARM



SIRE: VR SORBY SOLERO
 Estimated Breeding Value

KgM	KgF	KgP	Rel. %
113	109	104	99

 Daughters are 2190,
 Udder health 92, daughter Fert.90, feet and legs 102
 Prod. Index 109 NTM +19

G.S: 91716 SORBY

KgM	KgF	KgP
1401	23	43

 EBV; 114 Milk, 102 F, 112 prot.
 Yield index. 108 with 99% Rel.

G.D: 460 BLOMMA

Lact.	KgM	B.F.%	KgF	Prot.%	KgP	Days
1	8997	4.4	398	3.6	314	305

 Overall Breeding worth. 3

DAM MAKONGI NAIVASHA-D11
 Produced 18,154 kgM in 5 lactations.
 Highest was 5th. lact. at 4,544kgM in 305 days

G.D: MUHUGU GOODBOY AY.148

PTAM	PTAF%	REL%
17	0.01	35

G.D: MAKONGI A 17

CODE NO. AY. 2037
NAME: MAAKIOU NIGELA
K.S.B.NO.: 14399 VOL. LXXVI
DATE BORN: 29. 05. 2015

BREEDER: MAAKIOU DAIRY FARM



Dtr. Nigela

SIRE: PA HILL JULLI NIGEL-ET
 Estimated Breeding Values

KgM	KgF	Fat%	KgP	Prot.%	Rel. %
353	23	4.9	15	3.8	98

 Daughters are 1924
 Overall conformation of 0.35 with 96%
 Somatic cell BW. -0.20 with 99%
 Overall Breeding worth. 52

G.S: HIRVIVAINION JULII
 Breeding Values

KgM	KgF	Fat%	KgP	Prot.%	Rel. %
655	14	4.4	17	3.6	99

 Somatic cell BW. -0.16 with 99%
 Overall Breeding worth. 50

G.D: MOSELEY AJ NOLL
 Breeding Values

KgM	KgF	KgP	Rel. %
372	9	7	72

 Average 10 lact. 4597kgM x 3.60%P and 4.69%F
 Best was. 5724 KgM x 3.71% P, 4.73% F in 305 days.
 Overall Breeding worth. 62

DAM: MAAKIOU NINA 3RD.
 Produced 17,005 kgM in 3 lactations.
 Highest was 3rd. lact. at 6,980kgM in 305 days.

G.S: VISSERDALE SWEDMARK-ET

PTAM(KG)	PTAF%	FAT(Kg)	PROT (KG)	REL%
498	0.02	24	21	0.03 94

 Ptat: 0.40, Scs 3.27. in 211 dtrs, in 119 herds.

G.D.NINA 2ND 569

CODE NO. AY.: 2043
NAME: ELDOPOLY JULIENA
K.S.B. NO.: PED/14696 -LXXVIII
DATE BORN: 13.11.2016

BREEDER: ELDORET POLYTECHNIC



SIRE: PA HILL JULLI NIGEL-ET
 Estimated Breeding Values

KgM	KgF	Fat%	KgP	Prot.%	Rel.%
353	22	4.9	14	3.8	98

 Daughters are 1924
 Overall conformation of 0.35 with 96% Rel.
 Somatic cell count BW -0.20 with 99 % Rel.
 Overall Breeding worth: + 49

G.S: HIRVIVAINION JULLI
 Estimated Breeding Values

KgM	KgF	Fat%	KgP	Prot.%	Rel. %
655	14	4.4	17	3.6	99

 Somatic cell count BW -0.16 with 99% Rel.
 Overall Breeding worth : +48

G.D: MOSELEY AJ NOLL
 Estimated Breeding Values

KgM	KgF	KgP	Rel. %
372	9	7	72

 Average 10 lact. 4597kgM x 3.60 % Prot. and 4.69%F
 Best was 5,724 KgM x 3.71 % P X 4.73 % F in 305 days
 Overall Breeding worth: +62

DAM: ELLINA 69
 Produced 13,373 Kgm in 3 lactations
 Highest lactation was 2nd. at 5,197 KgM in 305 days.

G.S.: MAKONGI BLACKADDER (AY.155)
 BVE: 423 KgM with 76% Rel. in 16 daughters.

G.D: ELLINA 043
 Produced 11,694 Kgm in 3 lactations
 Highest lactation was 3rd at 4,285KgM in 305 days.

CODE NO. AY.2044
NAME: ADC-OLN LONG RUNX
K.S.B. NO.: PED/14692- LXXVIII
DATE BORN: 03.12.2016

BREEDER: ADC OL'GATONGO



SIRE: KELLCREST LONGRUN-ET (200Y0694)
 Estimated breeding Values

KgM	KgF	Fat%	KgP	Prot. %	Rel. %
734	28	-0.02	24	-0.01	94

 Daughters are 127 in 101 herds

G.S: DES CHEMOIS POKER-ET-8401621-VG86
 Estimated breeding Values

KgM	KgF	Fat%	KgP	Prot %	Rel.%
270	19	0.12	6	-0.04	99

 In 2401 dtrs in 404 herds.
 Overall conformation of 9
 Mastitis resistance.103 with 97% Rel. GLPI: 2370

G.D.: KELLCREST LEA-101890256-EX
 Estimated breeding Values

KgM	KgF	Fat%	KgP	Prot. %	Rel. %
1295	49	-0.06	49	0.07	88

 Produced 36,669kgM x 1469KgF x 4.0%Bf
 x 1298 Kgp x 3.6% P in 3 lactations.
 Highest was 3rd lactation at 13,800kgM in 305 days
 Overall conformation is 7 S.C.S OF 2.94

DAM: EMILY 6NP 008
 Produced 18,911 Kgm in 5 lactations
 Highest lactation was 3rd at 5,298KgM in 305

G.S: MADARAKA LELMENT LUCK (AY.161)
 BVE: 121 KgM with 56% Rel. in 18 daughters

G.D: EMILY 36
 Produced 18,529 kgM in 4 lactations.
 Highest was 3rd. lact. at 4,987kgM in 305 days

CODE NO. AY: 2045
NAME: ADC GALLEYLANE SGR EXPRESS
K.S.B.NO.: PED/14823-LXXVIII
DATE BORN: 31.12.2016

BREEDER: ADC KATUKE



A sire from longevity family

Dam to SGR Express that calved 10X and peaked at 32Kg per day

SIRE; RONICK SIMBAD (200AY0664)

Estimated breeding Values

KgM	KgF	Fat%	KgP	Prot. %	Rel. %
548	21	+0.02	15	-0.02	96

Daughters are 205 in 122 herds

Overall conformation of +9

Mastitis resistance. 96 with 94% Rel. GLPI 2090

DAM: MELODY 4 GZ-214

Produced 39,256 KgM in 8 lactations
 Highest lactation was 2ND at 5,194 KgM in 305 days



G.S.:MARGOT CALIMERO

KgM	KgF	Fat%	KgP	Prot.%	Rel. %
699	27	0.08	22	0.04	94

In 1008 daughters, in289 herds with 94% Rel.

Overall conformation of +8

Mastitis resistance. 101 with 97% Rel. GLPI 2322

G.D.: RONICK WILTON SIERRA.

KgM	KgF	Fat%	KgP	Prot.%	Rel. %
520	14	-0.08	12	-0.06	85

Produced 56,915 KgM in 5 lactations of 305 days.

Best lact. 13,139 KgM x 551KgF x 4.2 % Bf x 434KgP x 3.3%

Prot in 305 days. GLPI: 1891

G.S: GOGAR GATURU JUNIOR AY.152

+75KgM in 25 daughters in 10 herds.

BVE: 139KgM with 76% Rel. in 56 daughters

G.D; MELODY 9 GZ 079

Produced 24,315 kgM in 5 lactations.

Highest was 4th. lact. at 5,327kgM in 305 days

CODE NO. AY.2046
NAME: ADC GALLEYLANE AMMONIA
K.S.B.NO.: PED/14824-LXXVIII
DATE BORN: 13.06.2017

BREEDER: ADC KATUKE



SIRE: KELLCREST LONGRUN-ET (200Y0694)

Estimated breeding Values

KgM	KgF	Fat%	KgP	Prot. %	Rel. %
734	28	-0.02	24	-0.01	94

Daughters are 127 in 101 herds

Overall conformation of 5

Somatic cell score. 2.62 GLPI : 2345

G.S.: DES CHEMOIS POKER-ET-8401621-VG86

Estimated breeding Values

KgM	KgF	Fat%	KgP	Prot %	Rel.%
270	19	0.12	6	-0.04	99

In 2401 dtrs in 404 herds.

Overall conformation of 9

Mastitis resistance.103 with 97% Rel. GLPI: 2370

G.D.: KELLCREST LEA -1018990256-EX

Estimated breeding Values

KgM	KgF	Fat%	KgP	Prot. %	Rel. %
1295	49	-0.06	49	0.07	88

Produced 36,669kgM x 1469KgF x 4.0%Bf x

298 Kgp x 3.6% P in 3 lactations.

Highest was 3rd lactation at 13,800kgM in 305 days

Overall conformation is 7. S.C.S OF 2.94.

DAM: AMINA 6GZ-079

Produced 26,250 kgM in 6 lactations

Highest is on 4th lact. at 4,716KgM in 305 days

G.S: MARDEL PLATA

KgM	Kg F	%F	Kg Prot.	%P	Rel.%
435	14	-0.04	18	0.05	89

G.D: AMINA 8 GZ 113

Produced 16,529 kgM in 3 lactations.

CODE NO. **AY.2050**
 NAME: **ELDOPOLY LONGRUN**
 K.S.B.NO.: PED/15175-LXXX
 DATE BORN: 08.12.2017



BREEDER: ELDORET NATIONAL POLYTECHNIC

SIRE: KELLCREST LONGRUN-ET (200Y0694)

Estimated breeding Values

KgM	KgF	Fat%	KgP	Prot. %	Rel. %
734	28	-0.02	24	-0.01	94

 Daughters are 127 in 101 herds

G.S: DES CHEMOIS POKER-ET-8401621-VG86

Estimated breeding Values

KgM	KgF	Fat%	KgP	Prot %	Rel.%
270	19	0.12	6	-0.04	99

 In 2401 dtrs in 404 herds.
 Overall conformation of 9
 Mastitis resistance.103 with 97% Rel. GLPI: 2370

G.D: KELLCREST LEA-101890256-EX

Estimated breeding Values

KgM	KgF	Fat%	KgP	Prot. %	Rel. %
1295	49	-0.06	49	0.07	88

 Produced 36,669kgM x 1469KgF x 4.0%Bf
 x 1298 Kgp x 3.6% P in 3 lactations.
 Highest was 3rd lactation at 13,800kgM in 305 days
 Overall conformation is 7 S.C.S OF 2.94

DAM: ELDOPOLY VENA 76.

Produced 18,911 Kgm in 5 lactations
 Highest lactation was 3rd at 5,298KgM in 305 days

G.S: OJANIITYN RUMBA

KgM	KgF	F%	KgP	P%	Prodn.	NTM	Rel%
115	116	101	115	94	116	+5	99%

In 1859 daughters.

G.D: ELDOPOLY VENA 39TH.

Produced 15,126 Kgm in 4 lactations
 Highest lactation was 2nd at 4,968KgM in 305 days

CODE NO. : **AY 2051**
 NAME: **MAAKIOU D'ALBANEL SCOOPY**
 K.S.B. NO.: PED/15174 VOL.LXXX
 DATE BORN: 30.07.18



BREEDER: MAAKIOU ESTATE LTD

SIRE.: D'ALBANEL SCOOPY

Estimated Breeding Values

KgM	KgF	Fat%	KgP	Prot.%	Rel.%
1335	50	-0.06	41	-0.04	98

 Overall conformation of 8 with 56% Rel.
 Somatic cell count 2.89 with 99 % Rel.
 Dau. Fert. 96, Udder 8, F&L. 5.
 GLPI.2729.

G.S: LESSARD JUMPER -ET.

Estimated Breeding Values

KgM	KgF	Fat%	KgP	Prot.%	Rel. %
800	21	-0.15	25	-0.03	96

 In 265 daughters in 121 herds
 SCS of 2.84G, overall conformation rating of 8 with 92% REL.

G.D.: D'ALBANEL REALITY FACEBOOK.

Estimated Breeding Values

KgM	KgF	KgP	Rel. %
072	8	7	88

 Average lact. 8597kgM x 3.63 % Prot. and 4.43%F in 305 days
 GLPI.1908

DAM: MAAKIOU ADMIRAL LABEL 858

Produced 29,114 kgm in 5 lactations.
 Highest was 3rd. lact. at 6,372kgM in 305 days.

G.S.: ADC OLN BOYOSTAR AY.177

BVE: 329 KgM with 66% Rel. in 23 daughters.

G.D: ADMIRAL RAY 2ND.

Produced 22,750 kgM in 5 lactations.
 Highest was 4TH lact. at 4,885kgM in 305 days

CODE NO.: AY 2052
NAME: LORUKU VIKTOR
KSB NO: PED/15173 VOL.LXXX
DATE BORN: 25.12.18

BREEDER: LORUKU LTD



SIRE: VR VIMUR VIKTOR 37888
 INTERBULL BREEDING VALUES ESTIMATES.
 YIELD Prot kg Bfat kg. Fert. SCS F&L UD frame NTM Re.%
 112 112 109 93 99 111 98 100 +8 99
 In 2005 daughters in 1018 herds.
 Overall production index: 110, Breed av.100

G.S: VR VIMUR SWE.99716
 INTERBULL BREEDING VALUES ESTIMATES.
 YIELD Prot kg Bfat kg. Fert. SCS F&L UD frame NTM Re.%
 110 109 110 94 93 95 115 120 3 99
 In 1255 daughters in 821 herds.
 Overall production index: 109, Breed av.100

G.D: DNK000006886203471
 Estimated Breeding Value
 KgM KgF KgP Rel. %
 103 96 98 99
 Lact.4 : 8,940 KgM, 3.7% F, 3.8%P

DAM: LORUKU HEIDI 1697
 Produced 15,900 Kgm in 4 lactations
 Highest lactation was 2nd at 5,021 KgM in 305 days.

G.S: MARDEL VOLAGE- ET
 BVE: 423 KgM with 76% Rel. in 16 daughters.

G.D: HEIDI 1382
 Produced 13,994 Kgm in 3 lactations
 Highest lactation was 3rd at 4,685KgM in 305 days.

CODE NO.: AY.2053
NAME: ADC GALLEYLANE FREEZE RANGER.
KSB NO: PED/15179 VOL.LXXX
DATE BORN: 07.01.19

BREEDER: ADC KATUKE



SIRE: VR ALITALON FONDA FREEZE
 INTERBULL BREEDING VALUES ESTIMATES.
 YIELD Prot kg Bfat kg. Fert. SCS F&L UD frame NTM Re.%
 85 94 100 118 110 93 94 99 +13 99
 In 1662 daughters in 992 herds.
 Overall production index: 110, Breed av.100

G.S: VR FIMBE FONDA
 INTERBULL BREEDING VALUES ESTIMATES.
 YIELD Prot kg Bfat kg. Fert. SCS F&L UD frame NTM Re.%
 99 105 107 112 100 92 93 95 +13 98
 In 596 daughters in 436 herds.
 Overall production index: 107, Breed av.100

G.D.: JARTSA 1367332AAA.
 Estimated Breeding Value
 KgM KgF KgP Rel. %
 92 92 102 99
 Lact.3 : 9,540 KgM, 3.9% F, 3.9%P

DAM: AMMORIA 7 GZ 230
 Produced 22,630 Kgm in 5 lactations
 Highest lactation was 5th at 4,840KgM in 305 days

G.S: ADC OLN FLORIDA TONUI (AY.164)
 BVE: 121 KgM with 56% Rel. in 18 daughters.

G.D: AMMORIA 8GZ 040
 Produced 19,629 kgM in 5 lactations.
 Highest was 3rd lact. at 4,684kgM in 305 days

CODE NO.: AY.2054
NAME: MAAKIOU D' SCOOPY **BADGER**
KSB NO: PED/15178 VOL.LXXX
DATE BORN: 19.07.19



BREEDER: MAAKIOU ESTATE LTD.

SIRE: D'ALBANEL SCOOPY

Estimated Breeding Values
 KgM KgF Fat% KgP Prot.% Rel.%
 1335 50 -0.06 41 -0.04 98
 Overall conformation of 8 with 56% Rel.
 Somatic cell count 2.89 with 99 % Rel.
 Dau. Fert. 96, Udder 8, F&L. 5.
 GLPI.2729.

G.S: LESSARD JUMPER-ET

KgM	KgF	Fat%	KgP	Prot.%	Rel. %
800	21	-0.15	25	-0.03	96

In 265 daughters, in 121 herds with 94% Rel.
 Overall conformation of +8
 Somatic cell score. 2.86G with 92% Rel.
 GLPI 2473

G.D: D'ALBANEL REALITY FACEBOOK

Estimated Breeding Values
 KgM KgF KgP Rel. %
 072 8 7 88
 Average lact. 8,597kgM x 3.63 % Prot. and
 4.43%F in 305 days
 GLPI: 1908

DAM: MAAKIOU LADY JUSTICE 2ND. 822.

Produced 28,970 KgM in 5 lactations
 Highest lactation was 5TH at 6,584 KgM in 305 days .

G.S: MAKONGI IMPRESSARIO (AY.162)

+75KgM in 25 daughters in 10 herds.

G.D: MAAKIOU LADY JUSTICE 1

Produced 20,560 kgM in 4 lactations.
 Highest was 4th. lact. at 5,189kgM in 305 days

CODE NO.: AY.2055
NAME: MAAKIOU VIKTOR **POWERPAK**
KSB NO: PED/15177 VOL.LXXX
DATE BORN: 23.07.19



BREEDER: MAAKIOU ESTATE LTD.

SIRE: VR VIMUR VIKTOR 37888

INTERBULL BREEDING VALUES ESTIMATES.
 YIELD Prot kg Bfat kg. Fert. SCS F&L UD frame NTM Re.%
 112 112 109 93 99 111 98 100 +8 99
 In 2005 daughters in 1018 herds.
 Overall production index: 110, Breed av.100

G.S: VR VIMUR SWE.99716

INTERBULL BREEDING VALUES ESTIMATES.
 YIELD Prot kg Bfat kg. Fert. SCS F&L UD frame NTM Re.%
 110 109 110 94 93 95 115 120 3 99
 In 1255 daughters in 821 herds.
 Overall production index: 109, Breed av.100

G.D: DNK 00006886203471

Estimated Breeding Value
 KgM KgF KgP Rel. %
 100 87 92 99
 Lact.3 : 10,243 KgM, 3.6% F, 3.8%P

DAM: MAAKIOU MBIRI 3RD 857

Produced 24,857 kgM in 4 lactations
 Highest is on 3rd lact. at 6,972 KgM in 305 days.

G.S : MAKONGI BRENDAN (AY.173)

BVE: 289 KgM with 86% Rel. in 29 daughters in 3 herds.

G.D: MAAKIOU MBIRI 2ND.

Produced 17,829 kgM in 3 lactations.
 Highest was 3rd. lact. at 6,079kgM in 305 days

CODE NO.: AY.2056
NAME: MAAKIOU FREEZE **BISON**
KSB NO: PED/15176 VOL.LXXX
DATE BORN: 05.08.19



BREEDER: MAAKIOU ESTATE LTD.

SIRE: VR ALITALON FONDA FREEZE
 INTERBULL BREEDING VALUES ESTIMATES.
 YIELD Prot kg Bfat kg. Fert. SCS F&L UD frame NTM Re.%
 85 94 100 118 110 93 94 99 +13 99
 In 1662 daughters in 992 herds.
 Overall production index: 110, Breed av.100

DAM: MAAKIOU CAMILLA 2ND 929.
 Produced 25,605 Kgm in 5 lactations
 Highest lactation was 5th at 5,684KgM in 305 days

G.S: VR FIMBE FONDA P
 INTERBULL BREEDING VALUES ESTIMATES.
 YIELD Prot kg Bfat kg. Fert. SCS F&L UD frame NTM Re.%
 99 105 107 112 100 92 93 95 +13 98
 In 596 daughters in 436 herds.
 Overall production index: 107, Breed av.100

G.D: JARTSA 1367332AAA
 Estimated Breeding Value
 KgM KgF KgP Rel. %
 92 92 102 99
 Lact.3 : 9,540 KgM, 3.9% F, 3.9%P

G.S: ADC OLN BOYOSTAR (AY.177)
 BVE: 329 KgM with 66% Rel. in 23 daughters.

G.D: CAMILLA 1ST
 Produced 16,435 Kgm in 4 lactations
 Highest lactation was 3rd at 4,968KgM in 305 days

OTHER AYRSHIRE SIRES WITH SEMEN IN STOCK

No.	Code	Name	Sire	Dam	MG Sire
1	169	Tsunami	Kildare Jerry	Blanche 94	Langside Impact
2	170	Kios 2005	Birghdale Copper	ADC Katuke Tabasia	Makongi Kong
3	171	Madaraka Pullen	Kildare Jerry	Subukia 21	Crest Ayr. Kathys Royal Ace
4	173	Makongi Brendan	Royal Croft Brendan	Joyce 18	Botoisfbo
5	174	Oln Nixon	Birghdale Copper	Irene 68	Tusker (AY.112)
6	177	Boyostar	Covey-Farms Romeo.	ADC Oln Napkoi 6 ZP 071	Russel Meillari
7	178	Loruku Dilligent	Visserdale Dilligent	Harriet 1370	Oija (AY.108)
8	179	Loruku Gold	Birghdale Copper	Oriole 1358	Tallent (AY.095)
9	180	Pioneer	Mardel Plata	Eldopoly Venna 18th	Crest Ayr. Kathys Royal Ace
10	182	William	Shandy Walnut Conn	ADC Oln Irene 7 Oln 049	ADC Zea Meillari (135)
11	184	Regency	Mardel Plata	ADC Oln Kibira 4th -6ZP 06	Technical Merit
12	185	Etro	Visserdale Etro	Loruku Lassie 1341	Retake

No.	Code	Name	Sire	Dam	MG Sire
13	186	Loruku Otto	Visserdale Etro	Ottowa 1849	Mardel Volage-ET.
14	187	Oln Domebuck	Kildare Kellybuck	Domea 9th	Makongi Hercules.
15	188	Sector	Kildare Kellybuck	Tebesmet 1GZ 137	Lanet Stoo (AY.137)
16	190	Cherus	Bonnie Brae Heligo	Gogar Cherus	
17	191	Norman	Duo Star Normandin	Heidi 1382	Goldstream Rebellion
18	192	Jak	Ojaniityn Rumba	Adc Oln Auma 1NP 139	Makongi Hercules
19	193	Cleopas	Shady Walnut Conn	Eldopoly Venna 39	Covey- Farms Reno NC
20	196	Seron	Visserdale Etro	Eldopoly Elly 16th	Crest Ayr. Kathys Royal Ace
21	197	Oln Morogo	Purolan Orkko	2 Oln 74 Kiberne 83	Kisumu Beauty (AY. 142)
22	198	Oln Rebeck	Viikin Record	3 Np 24 Masai Mara	Kahama Ruto (AY. 153)
23	199	Kisam	Hyotylan Piuha	Adc Katuke 1gz 131 Ngomorit	Gaturu Junior (AY.152)
24	200	Katuke Finley	Purolan Orkko	0 GZ 136 Majimbo	Makongi Hercules (Ay.143)
25	2001	Style	Parepuusaaren Osandur	Vena 35	Mardel Aristote
26	2002	Madaraka Vorko	Purolan Orkko	Namanga 4th .	7ay57
27	2003	Maakiou Rumba	Ojaniityn Rumba	Nakuru 3rd (570)	Wilshore Pepper
28	2004	Alaska	Ojaniityn Rumba	Turbo 27	Ontario (AY.146)
29	2005	Misrata	Viikin Record	Burundi 11 (615)	B. Uma's Reno
30	2008	Graham	Parepuusaaren Osandur	Graham 9th	Gogar Ontario
31	2009	Voltage	Mardel Volage	Ammoria 3GZ 122	B.Uma's Reno
32	2012	Mutai	Palmyra Jerry Bendig	Venna 44	Strathburn Stardom
33	2016	K-Langs	Viikin Record	ADC Lanet Jerewa	ADC Zea Tana



Progeny group of KAGRC sires

CODE NO. GU. 507
NAME: ADC LANET **SOCHI**
K.S.B.NO.: PED. 3885 VOL. LXXV
DATE BORN: 05.01.14

BREEDER: ADC LANET



Sochi dtr that peaked at 29 Kg per day.



A high fertility sire at its best.

SIRE: KNAPPS MR AMERICA

Estimated breeding value						
KgM	KgF	%F	KgP	% P	Rel. %	
621	4	-0.32	5	-0.21	86	
In 54 daughters in 22 herds						
Overall conformation 2						
SCS. 3.13						
L.PI. 621						

G.S. :SHERMA VICTORY ELLAS ENHANCER

Estimated breeding value						
KgM	KgF	%F	KgP	% P	Rel.%	
810	26	-0.15	15	-0.19	92	
In 318 daughters in 127 herds						
Overall conformation 3						
SCS. 3.30 LPI. 1004						

G.D.: KNAPPS PERFECTO ALFINA

Estimated breeding value						
KgM	KgF	%F	KgP	% P	Rel. %	
- 436	-22	-0.02	-21	-0.09	66	
Overall conformation 2						
SCS. 2.75 LPI. 430						

DAM: KELSMOOR 4LT26

Produced 16,417 kg milk in 5 lactations
 Highest was on 3rd lactation with 4,307kg milk in 305 DAYS.

G.S: ADC LANET UPDOWN

G.D: KELSMOOR 6LT 45

Produced 9,784 kg milk in 3 lactations
 Highest lactation was 3rd. at 3,472 kg milk in 305 days

CODE NO. GU. 508
NAME: ADC LANET **GOLDEN JESS**
K.S.B. NO.: PED. 3653 VOL. LXXVII
DATE BORN: 31.08.16

BREEDER: ADC LANET



SIRE: GOLDEN J LES GEORGE (GEO)

PTAM	PTAF	F%	PTAP	P%	Rel.%	
+132	+13	0.10	3	0.0	96	

G.S.: FLAMBEAU MANOR TILLER LES-ET

Interbull.						
PTAM	PTAF	F%	PTAP	P%	Rel.%	
-116	+6	0.06	-4	0.0	97	
S.C.S 3.05, PTAT.1.10, Udder.1.4, Feet.0.50						
264 daughters in 102 herd						

G.D.: GOLDEN J OAK GRINCH-EX 90

Lact.	KgM	B.F	KgF	Prot.	KgP	Days
1	6,104	4.4	269	3.4	207	305
3	9,847	4.9	482	3.1		303

G.S.: MUKUMUM LIX. (GU.504)

KgM	B.F%	KgF	Prot %	KgP	Rel %	
500	-0.53	20	-0.17	13	38	

G.D.: KERICHO LF 14

Produced 3,842 kg milk in 4th lactation.

DAM: KERICHO O LF 35

Produced 9,449 kg milk in 3 lactations
 Highest was 3rd at 3,259 Kg milk in 305 days

CODE NO. GU. 509
NAME: ADC OLN LOGO CRESTAL
K.S.B.NO.: PED/ 3990 VOL.LXXX
DATE BORN: 06.07.19

BREEDER: ADC OLN GANTONGO



SIRE: COULEE CREST CONQUEROR LOGO

KgM	Kg F	BF%	Kg Prot.	%P	Rel.%
390	5	-0.02	9	-0.07	93

Net merit.133, PTI.51. PTAT.0.10, DPR. 0.4
 SCS 2.80, UDC 0.90, F&LC. 1.60
 Daughter av. 8,324 KgM, 4.6% BF, 3.4% P.
 In 117 daughters, in 41 herds.

G.S. :LES JAONNETS CARA CONQUEROR.

KgM	Kg F	BF%	Kg Prot.	%P	Rel.%
284	15	0.01	-1	-0.06	89

Net merit.192, PTI.36. PTAT.-0.20, DPR.1.3
 SCS 2.83, UDC 0.70, F&LC. -0.60
 Daughter av. 8,696 KgM, 4.6% BF, 3.3% P.
 In 251 daughters, in 74 herds.

G.D.: COULEE CREST AP LORILEE

Produced in her 1st lactation
 7,094 kgM x 4.7%Bf, 882 kgF x 3.5%P,
 646kg prot. in 305 days

G.S: YELLOW CRECK LEWIS CONRAD.

KgM	Kg F	BF%	Kg Prot.	%P	Rel.%
486	25	0.01	19	0.02	84

Net merit.176, PTI.28. PTAT.-0.60, DPR.-1.2
 SCS 2.89, UDC -0.40, F&LC. -1.10
 Daughter av. 8,323 KgM, 4.6% BF, 3.4% P.
 In 48 daughters, in 25 herds.

G.D: UHURU 1 NP 003

Produced 12,241 kgM in 3 lactations.
 Highest was 3rd. lact. at 4,285kgM in 305 days

DAM: UHURU 2 OG 14

Produced 12,566 kgM in 3 lactations.
 Highest was 3rd. lact. at 4,537kgM in 305 days.

CODE NO. GU.510
NAME: ADC LANET LOGO BONUS
K.S.B.NO.: PED/4024.LXXXII
DATE BORN: 17.01.20

BREEDER: ADC LANET



SIRE:COULEE CREST CONQUEROR LOGO

KgM	Kg F	BF%	Kg Prot.	%P	Rel.%
390	5	-0.02	9	-0.07	93

Net merit.133, PTI.51. PTAT.0.10, DPR. 0.4
 SCS 2.80, UDC 0.90, F&LC. 1.60
 Daughter av. 8,324 KgM, 4.6% BF, 3.4% P.
 In 117 daughters, in 41 herds.

G.S. :LES JAONNETS CARA CONQUEROR.

KgM	Kg F	BF%	Kg Prot.	%P	Rel.%
284	15	0.01	-1	-0.06	89

Net merit.192, PTI.36. PTAT.-0.20, DPR.1.3
 SCS 2.83, UDC 0.70, F&LC. -0.60
 Daughter av. 8,696 KgM, 4.6% BF, 3.3% P.
 In 251 daughters, in 74 herds.

G.D.: COULEE CREST AP LORILEE

Produced:
 7,094 kgM x 4.7%Bf, 882 kgF x 3.5%P,
 646kg prot. in 305 days in her 1st lactation

G.S: MUKUMU LIX

BVE. 272 KgM in 21 daughters in 5 herds
 with reliability of 59%

G.D: KERICHO LF 14

Produced 13,576 kgM in 3 lactations.
 Highest was 3rd. lact. at 4,756kgM in 305 days

DAM: KERICHO

Produced 18,396 kgM in 5 lactations.
 Highest was 3rd. lact. at 4,259kgM in 305 days.

CODE NO. GU. 511
NAME: ADC LANET LOGO LOTUS
K.S.B.NO.: PED/4023.LXXXII
DATE BORN: 20.01.20



BREEDER: ADC LANET

SIRE: COULEE CREST CONQUEROR LOGO
 KgM Kg F BF% Kg Prot. %P Rel.%
 390 5 -0.02 9 - 0.07 93
 Net merit.133, PTI.51. PTAT.0.10, DPR. 0.4
 SCS 2.80, UDC 0.90, F&LC. 1.60
 Daughter av. 8,324 KgM, 4.6% BF, 3.4% P.
 In 117 daughters, in 41 herds.

G.S. :LES JAONNETS CARA CONQUEROR
 KgM Kg F BF% Kg Prot. %P Rel.%
 284 15 0.01 -1 - 0.06 89
 Net merit.192, PTI.36. PTAT.-0.20, DPR.1.3
 SCS 2.83, UDC 0.70, F&LC. -0.60
 Daughter av. 8,696 KgM, 4.6% BF, 3.3% P.
 In 251 daughters, in 74 herds.

G.D.: COULEE CREST AP LORILEE
Produced in her 1st lactation
 7,094 kgM x 4.7%Bf, 882 kgF x 3.5%P,
 646kg prot. in 305 days

DAM: ADC LANET KLARA 2LN030
 Produced 11,334 kgM in 3 lactations.
 Highest was 3rd. lact. at 3,909kgM in 305 days.

G.S: KELSMOOR 6LT 45
 KgM Kg F BF% Kg Prot. %P Rel.%
 -119 18 0.07 6 - 0.01 89
 Net merit.205, PTI.-47. PTAT.0.00, DPR.-0.1
 SCS 3.37, UDC -0.3, F&LC. -1.0
 Daughter av. 8,011 KgM, 4.4% BF, 3.2% P.
 In 352 daughters, in 140 herds.

G.D: KLARA 4LT 24
 Produced 12,748 kgM in 3 lactations.
 Highest was 3rd. lact. at 4,985kgM in 305 days

OTHER GUERNSEY SIRES WITH SEMEN IN STOCK

No.	Code	Name	Sire	Dam	MG Sire
1	502	Kelsmor	Brown Eden Tradition	Moshi 8lt.26	Sweet Dream (Gu.488)
2	503	Eden	Brown Eden Tradition	Kelsmor 6lt 45	Waverly Jollyboy (GU.474)
3	505	Crown Major	Idle Gold Royal Crown - ET	ADC Chepsion 4lt.14	ADC Lanet Goliath
4	506	Bolema	Milborne Bolero	ADC Oln Maputo 4 Np 016	ADC Lanet Updown

CODE NO. JE 698
NAME: OLOLUA SEBASTIAN
K.S.B. NO.: PED. 10216- LXXVII
DATE BORN: 18.04.16

BREEDER: OLOLUA JERSEYS



Sebastian dtr that peaked 22 kgm per day.

SIRE: LYNBROOK TESTIMONIAL-ET

KgM	% BF	KgF	%P	KgP
242	5.5	12	4.1	14

In 73 daughters, in 58 herds with 87% Rel.
 Daus. Av. 8446 KgM, 4.14%BF, 3.45%Prot.
 BW. 160

DAM: OLOLUA MAUNGA'S KIKOI

Produced in two lactations
 8,374 Kgm, 5.7 % BF, 479 KgF in 305 days.
 Best was 2nd. at 4214 KgM, 5.7 %BF, 240KgF
 in 305 days



G.S.: FERNAIG ADMIRAL

Breeding Values.

Milk	BF%	Kg F	%Prot.	KgP	REL%
865	6.2	9	4.4	-7	97

BW. 164

G.D: LYNBROOK OM TRICK-ET

Av. 3 lacts
 6440kgM, 4.7%BF, 302kgF in 265d

G.S: TAWA GROVE MAUNGA-ET

Breeding Values.

Milk	BF%	Kg F	%Prot.	KgP	REL%
259	5.8	48	4.2	27	99

BW. 220

G.D: OLOLUA SAM'S ALYS

Av. 7 lacts 5126kgm x 4.89%bf x 250kgf in 305 days.

CODE NO. JE 700
NAME: OLOLUA MAUNGA'S BORIS
K.S.B. NO.: PED. 10413-LXXVIII
DATE BORN: 04.06.17

BREEDER: OLOLUA JERSEYS



SIRE: TAWA GROVE MAUNGA E.T

Breeding Values.

Milk	BF%	Kg F	%Prot.	KgP	REL%
259	5.8	48	4.2	27	98

BW. 258

G.S.: PARKWOOD CASPER

Breeding Values.

Milk	BF%	Kg F	%Prot.	KgP	REL%
301	5.5	39	3.8	16	99

BW. 146

G.D: TAWA GROVE CARLOS MAE

lact 1 2373kg 6.86% 163kg 264d

DAM : OLOLUA HATTEN GIN A VG 87

Produced 26,450 Kgm in 5 lactations with
 1305 Kg
 BF at 4.94 BF% in305 days.

G.S.: OKURA MANHATTEN ET

Breeding Values.

Milk	BF%	Kg F	%Prot.	KgP	REL%
614	5.0	38	4.0	36	99

BW. 220

G.D: OLOLUA MOET'S JEMIMA VG 89

Lact 1 3488kgM x 180kgF x5.2% bF in 333days

CODE NO. JE. 701
NAME: OLOLUA BOWIE'S HORATIO
K.S.B. NO.: PED/ 10414 VOL.LXXII
DATE BORN: 04.06.17

BREEDER: OLOLUA JERSEYS



SIRE: KONUI GLEN'S ELMO BOWIE

Breeding Values

KgM	Kg F	BF%	Kg Prot.	%P	Rel.%
401	39	5.3	29	4.1	84

 Overall Breeding worth in \$.202

G.S: ROYALS GREEN ELMO

Breeding Values

KgM	Kg F	BF%	Kg Prot.	%P	Rel.%
301	39	5.5	16	3.8	99

 Overall Breeding worth in \$.146

G.D.: KONUI GLEN ADS BRIONY

Average 6 lactations production.
 Produced 5,201 kgM with 4.9% BF, 253 kgF in 350 days

DAM: OLOLUA MAUNGA'S KIKOI. 9784-LXXIII

Produced 29.506kgM with 5.5 % BF AV, 1571 KgF in 6 lactations.
 Highest was 4th lact. at 5,551 kgM, 5.30% BF, 294Kg F in 305 days.

G.S.: TAWA GROVE MAUNGA-ET. NZL

Breeding Values.

KgM	Kg F	BF%	Kg Prot.	%P	Rel.%
259	48	5.8	27	4.2	98

 Overall Breeding worth in \$.258

G.D: OLOLUA SAM'S ALYS

Average 6 lactations production.
 Produced 5,201 kgM with 4.9% BF, 253 kgF in 350 days.333 days

CODE NO. JE. 702
NAME: OL'ENDETI CELEBRITY VALOR
K.S.B. NO.: PED/ 10777 VOL.LXXX
DATE BORN: 26.06.19

BREEDER: OL'ENDETI JERSEYS



SIRE: D&E CEREBRITY VALUE

Breeding Values

KgM	Kg F	BF%	Kg Prot.	%P	Rel.%
848	14	-0.12	24	- 0.03	99

 Net merit. 274, JPI.58. PTAT.0.70, DPR. -0.7
 Daughter av. 10,018 KgM, 4.5% BF, 3.5% P.
 In 1599 daughters, in 164 herds.

G.S: GALAXIES CELEBRITY-ET

Breeding Values

KgM	Kg F	BF%	Kg Prot.	%P	Rel.%
-513	-11	0.01	-16	0.07	99

 Net merit. -108, JPI.-12. PTAT.0.60, DPR. 1.3
 Dau.av. 9,535 KgM, 4.7% BF, 3.6% P.
 In 10276 daughters, in 886 herds.

G.D.: ALL LYNNS IMPULS VIRTUE-ET

Prod.10,043kgM 4.7%Bf, 469kgF 3.8%P, 386KgP
 In 305 days in 6th lactation.

DAM : OL' ENDETI ON TIME HONESTY

Produced 13,812 kgM in 3 lactations.
 Highest was 2nd lact. at 4,841kgM,5.53% B, 267 Kg BF in 305 days.

G.S.: LENCREST ON TIME-ET

Breeding Values

KgM	Kg F	%F Kg	Prot.	%P	Rel.%
172	-6	-0.20	13	0.09	99

 1547 daughters, in 632 herds.
 GLPI.1059

G.D: OL' ENDETI SAM'S HONEY

Produced 12,941 kgM in 3 lactations.
 Highest was 3rd. lact. at 4,625kgM in 305 days

CODE NO. JE.703
NAME: IMANI VANDRELL CAPTAIN
K.S.B. NO.: PED/ 10776 VOL.LXXX
DATE BORN: 12.08.19



BREEDER: IMANI DAIRY FARM



Harriet, Dam to Captain

SIRE: FARIA BROTHERS VANDRELL-ET

KgM	Kg F	BF%	Kg Prot.	%P	Rel.%
445	-9	-0.14	19	0.01	99

Net merit. 153, JPI.56. PTAT.0.30, DPR. 2.1
 Dau.av. 10,091 KgM, 4.7% BF, 3.7% P.
 In 15,442 daughters, in 328 herds.

G.S.: ALL LYNNS LEGAL VISIONARY-ET

KgM	Kg F	BF%	Kg Prot.	%P	Rel.%
487	5	-0.09	23	0.02	99

Net merit. 230, JPI.56. PTAT.0.40, DPR.-1.2
 Dau.av. 10,316 KgM, 4.6% BF, 3.6% P.
 In 5707 daughters, in 699 herds

G.D.: JX FARIA BROTHERS ACTION DEAN SMITH {1}

Prod.10,419kgM 4.8%Bf, 495kgF 3.5%P, 367KgP
 In 305 days in 1st lactation

G.S.: CRESENT SENATOR SAM NZL

KgM	Kg F	BF%	Kg Prot.	%P	Rel.%
670	32	5.2	20	3.8	99

Overall Breeding worth in \$.69

DAM : EX-LOLUA HARRIET

Produced 13,519 kgM in 3 lactations.
 Highest was 3rd. lact. at 5,172kgM in 305 days

G.D: LOLUA BOWIE NAOMI

Produced 11,441 kgM in 3 lactations.
 Highest was 3rd. lact. at 4,685kgM in 305 days

OTHER JERSEY SIRES WITH SEMEN IN STOCK

No.	Code	Name	Sire	Dam	MG Sire
1	648	Firecracker	M. Lawn Bright Spot	Bullion's Mary	Bullions Warrior (640)
2	653	Sovereign	Noble Natalie Dazzler	Avalon Monarch Susue	Windsor Oriel's Monarch
3	658	Volvo	Fyn Haug	Volvo 5th.	Birchgrove Golden Romeo
4	666	Wellington	Ojy Mikkel Djhb	Ololua Glory	Ololua Glens Glory
5	667	Cardigan	Ojy Mikkel Djhb	Ololua Blue Hazel	Ferdon Tandras Herald
6	669	Impreial Duke	Meadow Lawn Imperial	Ol Endeti Coronet	Ferdon Gleans Coronet
7	673	Mugumo	Oakwood Keeping Designer	Ol Endeti Mohagony	Ferdon Grand Glory
8	674	Ololua Parsely	Merivale Senator	Ololua Blue Hazel	Ferdon Tandras Herald
9	676	Pals Ace	Lilac Grove Ring's Pal	Glory's Aphrodite	Ferdon Grand Glory
10	683	Suzuki	Ferdon Tandras Elvis	Ol Endeti Imperial Ngina	Meadow Lawn Imperial

No.	Code	Name	Sire	Dam	MG Sire
11	684	Fame	Silver Falls Quick Fame	Ontulele Queen	Damascus Lucifers
12	685	Darwin	Parkwood Casper	Ol'endeti Imperial Dawin	Meadow Lawn Imperial
13	686	Pavarotti	Sooner Centurion	Ololua Senators Primrose	Merivale Senator
14	687	Mortimer	Lester Sambo	Ol'endeti Imperial Morlane	Meadawn J. Imperial
15	688	Carreras	Rock Ella Paramount	Ololua Sams Catherine	Cresent Senator Sam
16	689	Hogan	Okura Manhatten -E.T	Ololua Centurion Imogen	Sooner Centurion -ET
17	690	Shalimar	Pine Haven Senior	Ol'endeti Dukes Shannon	Ol'endeti Imperial Duke
18	694	Rumble	Okura Lika Murmur	Ololua Hatten Gina VG.87	Okura Manhatten- ET
19	695	Seiko	Lencrest On Time-Et	Ol'endeti Judes Sandra	Curtsey Duncan Jude
20	699	Gabriel	Hollylane Lilibet's Legacy	Ol'endeti Sultan's Halycon	SHF Centurion Sultan

SAHIWAL

CODE NO. SA.771
NAME: EL KARAMA 1146-TECNO
K.S.B. NO.: F/1864
DATE BORN: 12.09.11



BREEDER: EL KARAMA SAHIWALS

DAMS PRODUCTION:

She peaked at 14 Kg milk per day.

SIRE: EL KARAMA 8011

G.S: EL KARAMA 1052

G.D: EL KARAMA 3213

DAM: EL KARAMA 8110

G.S: EL KARAMA 1142 CHONGO

G.D: EL KARAMA 1062

CODE NO. SA 772
NAME: EL KARAMA 2014-SAMSUNG
K.S.B. NO.: PB/1595
DATE BORN: 18.07.12



BREEDER: EL KARAMA SAHIWALS

DAMS PRODUCTION:

She averaged 13 Kg milk per day and peaked at 15 Kg per day.

SIRE: EL KARAMA 7148

G.S: EL KARAMA 8004

G.D: EL KARAMA 8176

DAM: EL KARAMA 1009

G.S: EL KARAMA 6211- EX.UK

G.D: EL KARAMA 1078

CODE NO. SA 776
NAME: EL KARAMA 3192-TOSHIBA
K.S.B. NO.: PB/1598
DATE BORN: 16.10.13



BREEDER: EL KARAMA SAHIWALS

DAMS PRODUCTION:

She averaged 14 Kg milk per day and peaked at 17 Kg per day.

SIRE: EL KARAMA 9136

G.S: EL KARAMA 2028

G.D: EL KARAMA 5085

DAM: EL KARAMA 5035

G.S: EL KARAMA 8075

G.D: EL KARAMA 0060

CODE NO. SA. 777
NAME: EL KARAMA 8137-LEMON
K.S.B. NO.: PED/2795-LXXXII
DATE BORN: 30.12.18



BREEDER: EL KARAMA SAHIWALS

DAMS PRODUCTION:

She averaged 14 Kg milk per day and peaked at 17 Kg per day.

SIRE: EL KARAMA 4006-2014 PB

G.S: EL KARAMA 9058-2009. F/1696

G.D: EL KARAMA 3186-2003 F/1482

DAM: EL KARAMA 5029-2015 PED

G.S: EL KARAMA 107-2010

G.D: EL KARAMA -005

CODE NO. SA. 778
NAME: EL KARAMA 9021-GINGER
K.S.B. NO.: PED/ 2796
DATE BORN: 15.02.19



BREEDER: EL KARAMA SAHIWALS

DAMS PRODUCTION:

She averaged 16 Kg milk per day and peaked at 18 Kg per day

SIRE: EL KARAMA 4003-2014

G.S: EL KARAMA 1122-2011

G.D: EL KARAMA 0145-2010

DAM: EL KARAMA. 8079-2008

G.S: EL KARAMA 8004-1998 PB/1293

G.D: EL KARAMA 4231-2004

CODE NO. BO. 781
NAME: YOANI BIY-2036
K.S.B. NO.: PED.2267 - LXXV
DATE BORN: 11.10.11



BREEDER: EL YOANI RANCH

SIRE: V7Y-676. PUREBRED. CERT. 11912

G.S.: SOLIO 200. F/14891

G.D.: 7719-F/14923

DAM: BIY-1687. PUREBRED. CERT. 14038

G.S.: V7Y-562. PUREBRED. CERT. 12802

G.D.: YOANI BIY - 1117. PED.

CODE NO. BO. 783
NAME: OL' PEJETA 1863-OXYGEN
K.S.B. NO.: PB.17182
DATE BORN: 20.01.15



BREEDER: OL' PEJETA RANCHING

DAM: PEJ. 1453 PED/ 1830- LXIX

G.S.: OL PEJ. 1057 PED/ 1527 -LXII

G.D.: OL PEJ. 1445 PED/ 1829- LXIX

DAM: PEJ. 1453 PED/ 1830- LXIX

G.S.: 2727 PB/ 10844

G.D.: 1049 PB/11836

CODE NO. BO. 784
NAME: OL' PEJETA 1889-OPPO
K.S.B. NO.: PB.17343
DATE BORN: 06.08.15



BREEDER: OL' PEJETA RANCHING

SIRE: 1433. PED/ 2005-LXXI

G.S.: OL PEJ. 1197 PB/ 12914

G.D.: OL PEJ. 1414 PB/ 13618

DAM: OL; PEJ. 1714 PED/ 2050- LXXII

G.S.: 1178 PB/ 12873

G.D.: 1023 PB/ 11398

CODE NO. BO. 785
NAME: MOGWON 6169 - **MARIO**
COAT COLOUR: GREY WITH BLACK POINTS
K.S.B. NO.: PUREBRED.18412
DATE BORN: 03.12.17



BREEDER: : MOGWOONI LTD

SIRE: MOGW. 4833 PED/ 2118-LXXVIII

G.S.: MOGW. 1195 PED/1678 VOL.LXV
G.D.: 8MK 201 PB/ 13298

DAM: MOGW. 5791 PED/ 2528- LXXVIII

G.S.: LOLLEDAIGA 1149, PED/ 1887-LXX
G.D.: 5258 PB/ 15897

CODE NO. BO. 786
NAME: MOGWON 6350 - **BRIAN**
COAT COLOUR: BLACK AND WHITE
K.S.B. NO.: PUREBRED.18417
DATE BORN: 02.01.19



BREEDER: : MOGWOONI LTD

SIRE: MOGW. 1528 PED/ 16080

G.S.: MOGW. 500 PB/13431
G.D.: 1361 PB/ 14728

DAM: MOGW. 5432 F/ 20492

G.S.: MUGW. 1427 PB/13848
G.D.: NK

COMPOSITE BREED

CODE NO. CX. 003
NAME: MAGIC 50- **KALLA 249.**
COAT COLOUR: BROWN WITH WHITE SPOTS
K.S.B. NO.: PED/ 003-LXXXI
DATE BORN: 03.03.17



BREEDER: MAKITOSHA DAIRY FARM

BREED MIXTURE

The breed mixture of Kalla is Gir 50%, Jersey 25%, Other exotic 19% and 6% Sahiwal.

SIRE: EROS TE 5692

G.S.: METEOR

Predicted Transmitting Ability.

PTA: 92.0

KgM	KgF	KgP	Rel.%
141	4.3	12.2	79

G.D.: PROFANA

Weighed 801 Kg at 5yrs 8 months.
 Beta-Casein. A2A2

A worldwide record holder of milk production of improved Gir.

Peaked 17,120 Kg Milk in a lactation

DAM: MAKITOSHA 249/S

Produced 6,953 Kg Milk in 328 days in her 4th lactation and peaked at 31.4 Kg milk per day

G.S.: ROCK MAPLE BROOK MANNIX. (01JE0330)

Predicted Transmitting Ability.

KgM	KgF	Fat%	KgP	Prot.%	Rel.%
1757	83	0.01	62	-0.02	75

PTAT. 3.4 with 76 % Rel.

G.D.: 107/S

Produced 6,289 Kg Milk in 1st lactation and Peaked 37.5 Kg Milk per day.

YOUNG SIRES IN WAITING

AYRSHIRE

No.	Code	Name	Sire	Dam	MG Sire
1	2057	Venus	Vr Viken Uudin Ultra	Eldopoly Vena 93	Ojaniityn Rumba
2	2058	Lector	Kamouraska Subban	Eldopoly Elli 98	Hyotylan Piuha
3	2059	Lockdown	D'albanel Scooby	ADC Oln Phylinda 1 Oln 106	Mardel Volage E.T
4	2060	Visat	Glen Malcolm Visa	ADC Katuke Tebesmet O GZ 078	Mardel Volage E.T
5	2061	Camara	Vr.Alitalon Fonda Freeze	ADC Oln Masai Mara	B. Uma's Reno
6	2062	Valiant	Vr Vimur Viktor	ADC Katuke Hadija 1GZ 082	Mardel Volage E.T
7	2063	Rainbow	Des Coteaux Revolution-ET	Loruku Lulu 1820	Foske 92483
8	2064	Tokyo	Des Coteaux Revolution-ET	Loruku Hamburg 1766	Asmo Ullimulli
9	2065	Stirlin	Des Coteaux Rafting-ET	ADC Katuke Moroto	Mardel Volage E.T
10	2066	Harun	Kamouraska Subban	Hemlong 1046 Mwahe 1	Palmyra Tri-Star Burdette-E.T

FRIESIAN

No.	Code	Name	Sire	Dam	MG Sire
1	4080	Mikel	Pen-Col Marty-ET	ADC Nma Geisha 014	Laclar Mtoto Anando
2	4081	Curfew	Drakkar Baltasar-ET	Tujenge TJ 602	Willow-Marsh-Cc Gabor -ET
3	4082	John	Bgp Delta Force One-ET	Hemlong 1037 Sunday 1	Mr.Ships-Holm Con Gerhard
4	4083	TetuBoy	Dock Conor-ET	Kinuthia ZAIN KF45 Y 16	Dansire Elvis Emmett
5	4084	Francis	J-Mor Ss Homer-ET	Joyfarm Flo JF 016	Stoots Jet Test Pilot-Et
6	4085	Ferdinard	Regan- Danhof Capone-ET	Hemlong 1135 Kanini 1 -Touch	My-John Touch-ET
7	4086	Hustler	S-S-I Doc Hollywood-ET	Hemlong 1136 Nyameni 1.1	De-Su Epc Clabtree 11336-ET
8	4087	Chemoiwo	Mr OCD Epic Dragonheart-ET	Edfarm July 1608	Sasumua Taurus (FR 4015)

JERSEY

No.	Code	Name	Sire	Dam	MG Sire
1	704	Lazarus	Kaitaka Murmur Lazarus	Ol' Endeti Legacy's Helena	Hollylane Lilibet's Legacy
2	705	Peregrine	Pukeroa Tgm Manzello	Ololua Centurion Cassandra -ET	Sooner Centurion-ET

OTHER BEEF SIRES WITH SEMEN IN STOCK

No.	Code	Name	Sire	Dam	MG Sire
HEREFORD					
1	812	Gondolier	Nyangi Venture	Chep.Rosette 1 st .	Danure Commanding Officer
2	814	Pound Maker	Justamere 628	Adc Chep. Rowan 7th	Bean Desert I Kernel
CHAROLAIS					
3	833	Fuka	Aristo	Caserne	Usufruit
4	834	India	Camelia	Voltige	Unico
5	835	Jolyon	Batailleur	Azur	Unic
6	836	Quito	Eperon	Solio Huruma	Albatros
7	837	Pierre	Mmb Cypress	Forest Naomi	Tattenhall Hublot M.F
8	838	Savlon	Scottish Mercury	Solio Laika	Camelia
SIMMENTAL					
9	853	Rivers Ranch Horex	Hobald	Isaria	Helmut
10	854	Herbert			
11	855	Cross Lanes Donald Duck	Scottish Marquis	Bellamore	Profi
ITALIAN BREEDS WITH SEMEN IN STOCK					
1	Giganie	Romagnola			
2	Obriste	Chianina			

AGENTS THAT STOCK KAGRC PRODUCTS

TRANS – NZOIA COUNTY

Name of Agent	Area of Operation	Physical Address	Tel. Number	Email Address
North Rift A.I Providers Project	Kitale Town	P.O. Box 3829- 30200, Kitale	0720 838063 0711 287275	northriftai@yahoo.com

BUNGOMA COUNTY

Name of Agent	Area of Operation	Physical Address	Tel. Number	Email Address
Naitiri Dairy Farmers Co-op Ltd	Naitiri	P.O.Box 1 – 50211 Naitiri	0728 840922	naitiridairy@yahoo.com
Kaptama Farmers Co-op Society Ltd	Mt. Elgon/ Kapsokwony/ Kaptama Market	P.O Box 5 Kapsokwony	0728 819745	kaptamafcs@gmail.com

KAJIADO COUNTY

Name of Agent	Area of Operation	Physical Address	Tel. Number	Email Address
Katheju Agencies	Ngong	P.O. Box 350- 00208 Ngong	0722 892686	juliusmutea@yahoo.com
O'loitoktok Farmers Centre	Loitoktok	P.O. Box 9 Loitoktok	0711 203221	drfranklijodi@gmail.com
Boma Agrovvet Ongata	Rongai	P.O. Box 4724- 00506 Nairobi	0721 387478	muriungigeorge1@gmail.com
Munks Agrovvet	Kiserian	P.O. Box 1308-00208	0724 912833	ednakemunto12@gmail.com

LAIKIPIA COUNTY

Name of Agent	Area of Operation	Physical Address	Tel. Number	Email Address
Country Focus Nyahururu Agrovvet		P.O. Box 1846- 20300 Nyahururu	0722 261532	petergaitah@gmail.com
Farmers Interlink Enterprises	Nanyuki Kiganjo	P.O. Box 21	0722 644904	mwaauramburu12@gmail.com
Nyala Dairy Farmers Co-op Society	Ndaragwa Shopping Centre	P.O Box 27 Ndaragwa	0724 214474; 0721 231153	nyalamaziwa@gmail.com nyalaagrovvet@gmail.com

AGENTS THAT STOCK KAGRC PRODUCTS

CONT. NAKURU COUNTY

Name of Agent	Area of Operation	Physical Address	Tel. Number	Email Address
Menengai Agrovet Enterprises Ltd	Nakuru	P.O. Box 360-20100 Nakuru	0722 808701	smuthui57@gmail.com
Rabby A.I Services	Molo Town	P.O. Box 852 Molo	0722 383623	mrahab31@gmail.com
Mesha Agrovet Njoro Town	Town	P.O. Box 216 Njoro	0724 961943	margaretmundi@yahoo.com
Torochtich Agrovet	Olenguruone	P.O Box 97 Olenguruone	0722 362781	kipronokennethbiwott-@gmail.com

UASIN GISHU COUNTY

Name of Agent	Area of Operation	Physical Address	Tel. Number	Email Address
Mid Rift Animal Breeding CBO	Moi's Bridge Town	P.O.Box 14 Moi's Bridge	0725 908808	felixbett@gmail.com
Thorn tree A.I Services	Eldoret Town	P.O.Box 846 Eldoret	0721 821555	kashah2008@gmail.com
Chamtany Farmers Centre	Kapseret	P.O Box 528-30300 Kapsabet	0722 385360	chafacel@gmail.com

NYERI COUNTY

Name of Agent	Area of Operation	Physical Address	Tel. Number	Email Address
Mukurweini-Wakulima Dairy Ltd	Mukurwe-ini Town	P.O. Box 232-10103 Mukurwe-ini	0722 814900	info@wakulimadairy.co.ke
Country Veterinary Services	Nyeri Town	P.O. Box 12242 Nyeri	0722 406668	clinic@countryvetserv.com
Amboni Agrovet	Mweiga Town	P.O.Box 315 Mweiga	0721 476350	amboniagrovet@yahoo.com
Karatina Veterinary Centre	Karatina	P.O. Box 1299 Karatina	0720 390789	
Othaya Agrovet and Livestock Genetic Supplies	Othaya Town	P.O. Box 557 Othaya	0721 784604	mainamilton@yahoo.com
Farmers Track Agrovet	Chaka	P.O Box 21 -Kiganjo	0722 644904	mwauramburu12@gmail.com

KERICHO COUNTY

Name of Agent	Area of Operation	Physical Address	Tel. Number	Email Address
Kipyemit Veterinary & A.I Services	Chepsiende, Kericho	P.O.Box 62 Chesinende	0721 869348	kipkiruiphil@gmail.com
Kipgaa Farmers Agrovet	Belgut Town	P.O. Box 838-20200 Kericho	0723 464875	kronokenneth@gmail.com
Kericho Breeders' Services	Litein	P.O Box 1638-Ainamoi Road. Kericho	0723 803388	mutai_noah@yahoo.com

MURANG'A COUNTY

Name of Agent	Area of Operation	Physical Address	Tel. Number	Email Address
Kandara Vet Centre	Kandara Trading Centre	P.O.Box 828 Muranga	0722 710679	kandaravetcentre@gmail.com
Elika Agrovet	Muranga Town	P.O.Box 828-00200 Nairobi	0722 710679	elikaagrovet@yahoo.co.uk
Jupiter Veterinary Services	Kiria-ini, Murang'a	P.O.Box 34 Kiriaiini	0722 691374	peter.thuku93@gmail.com
Thika Farmers Centre	Kangari	P.O.Box 1408-01000 Thika	0724 411658	jkinuthia587@gmail.com
Elika Agrovet	Kangema	P.O.Box 828-00200 Nairobi	0722 710679	elikaagrovet@yahoo.co.uk
K-Median Farmers Point	Gatanga Town	P.O. Box 97-01013 Gatura	0720 426981	kmedianfarmers@gmail.com kabaiyajoh@gmail.com
Raesika Agrovet	Karega Shopping Centre	P.O. Box 101 Kigumo	0723 250506 0742 736590	njugunaduncan021@gmail.com

AGENTS THAT STOCK KAGRC PRODUCTS

CONT. BOMET COUNTY

Name of Agent	Area of Operation	Physical Address	Tel. Number	Email Address
David Rotich and John Arap Langat	Bomet	P.O.Box 756 Kericho	0722 136240 0710 213332	dr.davidrottich@yahoo.com

KAKAMEGA COUNTY

Name of Agent	Area of Operation	Physical Address	Tel. Number	Email Address
Kakamega county A.I Services	Kakamega County	P.O. Box 871-50100 Kakamega	0713 437161 0720 244037	jasonmichieka@yahoo.com

NYANDARUA COUNTY

Name of Agent	Area of Operation	Physical Address	Tel. Number	Email Address
Baraka Vet Ltd	Miharati Town	P.O.Box 49- 20318 North Kinangop	0728 119148	barakavet@gmail.com
Baraka Vet Ltd	Engineer & Njabini	P.O.Box 49- 20318 North Kinangop	0728 119148	barakavet@gmail.com
Country Focus Ol-kalou Agrovet	P.O.Box1846-20300	Nyahururu	0722 261532	petergaitah@gmail.com
County Government of Nyandarua	Nyandarua	P.O Box 701 - Olkalou	0719 232323	agriculture@nyandurua.go.ke
Royal Veterinary Supplies	Mwenda Andu Trading Centre	P.O. Box 26 South Kinangop	0703 257986	joycemwega2015@gmail.com

MERU COUNTY

Name of Agent	Area of Operation	Physical Address	Tel. Number	Email Address
Meru Central Dairy Co-op Union	Meru	P.O. Box 2919 -60200 Meru	0643130081/82 0710 901376	maziwa@merudairy.co.ke sales@merudairy.co.ke
Meru Animal Health Workers	Nkubu	P.O. Box 750 Nkubu	0725 332004	mahwgsacco@yahoo.co.uk
Nyambene Dairy Farmers Co-op Ltd	Maua Town	P.O. Box 493 - 60600 Maua	0726 932351	nyarimi2015@gmail.com
Farmlinks Kenya Ltd	Meru Town	P.O. Box 2529-6020 Meru	0725 519642 0733 558108	farmlinkskenya@gmail.com
Southlands Dairies	Nkubu	P.O. 3028-60200 Meru	0722 350020	kathendus@yahoo.com

EMBU COUNTY

Name of Agent	Area of Operation	Physical Address	Tel. Number	Email Address
Hirams Vet Centre and A.I Services	Embu Town	P.O.Box 1125 Embu	0719 357567	hiramsvet@gmail.com
Farmline Agencies	Embu Town	P.O.Box 2576 -60100 Embu	0723 675852 0773 307792	mirayafarmline@yahoo.com
Catholic Diocese of Embu	Kangaru	P.O. Box 884 - 60100 Embu	0728 297155	doeadmin@caritasembu.co.ke
Farmlink Enterprises Ltd **	Embu Town	P.O. Box 1464 Embu	0725 519642 0733 558108	syluschuchu@gmail.com

KIAMBU COUNTY

Name of Agent	Area of Operation	Physical Address	Tel. Number	Email Address
Thika Farmers Centre Ltd	Gatundu Town	P.O.Box 1408 -01000 Thika	0723 287252	jkinuthia587@gmail.com
Jathe Enterprises	Kikuyu	P.O.Box 137 Kikuyu	0722 907538	jathe@yahoo.com samuel.gachoka@yahoo.com
Thika Farmers Centre	Thika Town	P.O.Box 1408 -01000 Thika	0724 411658	jkinuthia587@gmail.com
Rawam Enterprises Ltd	Githunguri Town	P.O.Box 189-00216 Githunguri	0710 739820	rachaelnjoroge20@gmail.com
Makrovet Sales and Services	Karuri Township	P.O.Box 577-00219 Karuri	0721 230189	johnnyutu.mungai10@gmail.com
Smuka Veterinary Centre	Kiambu Town	P.O.Box 125-00900 Kiambu	0724 983883	drsmkabaia@gmail.com
Kilimo Agrovet Ltd	Limuru Town	P.O.Box 1493 - 00217 Limuru	0722 245416	kilimo.vets@yahoo.com
Wamunga Investment Ltd **	Wangige	P.O. Box 37598 -00100 Nairobi	0720 555526	wamungainvestments@yahoo.com

AGENTS THAT STOCK KAGRC PRODUCTS

CONT. NAIROBI COUNTY

Name of Agent	Area of Operation	Physical Address	Tel. Number	Email Address
Nairobi Vet. Centre	Nairobi	P.O BoX 72788 -00200 Nairobi	0729 852658	accounts@nairobiwet.co.ke

KISII COUNTY

Name of Agent	Area of Operation	Physical Address	Tel. Number	Email Address
Enochem Agrovet	Kisii Town	P.O. Box 4112 -40200 Kisii	0718 332260 0713 123740	enochemagrovet@gmail.com

MACHAKOS COUNTY

Name of Agent	Area of Operation	Physical Address	Tel. Number	Email Address
Makamithi Machakos Town Enterprises Ltd	Machakos Town - 90100 Machakos	P.O. Box1817	0724 236529	jenifermangu@yahoo.com
Kambusu Dairy Co-op Society Ltd	Tala Market	P.O.Box 213 Tala	0722 432293	kambusudairyselfhelp-group@gmail.com

THARAKA NITHI COUNTY

Name of Agent	Area of Operation	Physical Address	Tel. Number	Email Address
Nyanja Agrivet Kiriani Supplies	Chogoria	P.O. Box 450-60401 Chogoria	0733 648297	nyagarucha@yahoo.com
Chuka Veterinary Services	Chuka	P.O. Box 18 Chuka	0712 554402	isaacgitari2015@gmail.com

KIRINYAGA COUNTY

Name of Agent	Area of Operation	Physical Address	Tel. Number	Email Address
Ukulima Agrovet Services	Kerugoya Town	P.O.Box 1034 Kerugoya	0722 566917	murithi@ukulimaagrovet.co.ke
Alphaslopes Agrovet Supplies	Kirinyaga- Mwea Shopping Centre	P.O. Box 10431- 00200 Nairobi	0722 137244	wanjirumonicah8@gmail.com
Sagamu Agrovet	Kerugoya, Kutus	P.O. Box 30095- 00100 Nairobi	0736 469795	sagamu63@gmail.com
Mamba Agrovet Services	Kerugoya Town	P.O. Box 716 Kerugoya	0722 351527	gichangirichard@yahoo.com

BARINGO COUNTY

Name of Agent	Area of Operation	Physical Address	Tel. Number	Email Address
Baringo Agricultural Marketing Services Co-op Ltd	Eldama Ravine	P.O.Box 41 Eldama Ravine	0722 921720	bamskos@gmail.com

NANDI COUNTY

Name of Agent	Area of Operation	Physical Address	Tel. Number	Email Address
Tanykina Dairy Plant Ltd	Kabiyet/Mosoriot	P.O Box 4844 Eldoret	0721 220471 0722 665531 0715 214388	tanykina@gmail.com
Kitilit Agrovet	Kapsabet Town	P.O Box 475 - 30300 Kapsabet	0717 541248	kirwaj@gmail.com

KISUMU COUNTY

Name of Agent	Area of Operation	Physical Address	Tel. Number	Email Address
Aniworld Veterinary Clinic	Kisumu	P.O. Box 7102- 40100 Kisumu	057 2029971	info@aniworldvetclinic.co.ke

SIAYA COUNTY

Name of Agent	Area of Operation	Physical Address	Tel. Number	Email Address
AVEPO Enterprises	Siaya Town	P.O Box 831 40600 Siaya	0722 976171	avepoent@gmail.com

VIHIGA COUNTY

Name of Agent	Area of Operation	Physical Address	Tel. Number	Email Address
Chofumbo Agroventures Ltd	Vihiga	P.O. Box 60-50310 Vihiga	0723 115314	chofumbo@yahoo.com
Jojia Veterinary Consultancy	Kwa Shem	P.O Box 259 - 50311 Wodanga	0719 661122	atsiyah@gmail.com

AGENTS THAT STOCK KAGRC PRODUCTS

CONT. NAROK COUNTY

Name of Agent	Area of Operation	Physical Address	Tel. Number	Email Address
Ngulot Chemist	Mulot	P.O. Box 274 Bomet	0715 393256	ngulotchemistlimited@gmail.com

NYAMIRA COUNTY

Name of Agent	Area of Operation	Physical Address	Tel. Number	Email Address
Borabu Agrovet	Kijauri/ Nyansiongo	P.O BOX 31-40502 Nyansiongo	0722 724224	shemmireri@gmail.com

ELGEYO MARAKWET COUNTY

Name of Agent	Area of Operation	Physical Address	Tel. Number	Email Address
Oasis Farmers Point	Iten	P.O BOX 167-30700 Iten	0721 257016	stekonet2008@yahoo.com

BUSIA COUNTY

Name of Agent	Area of Operation	Physical Address	Tel. Number	Email Address
Orion Farmcare Enterprises	Bumala 50400 Busia	P.O BOX 367 -	0726 865192	dennisodhiambo@ymail.com

COUNTY GOVERNMENTS THAT STOCK KAGRC PRODUCTS

No.	Name of County
1.	Baringo
2.	Bomet
3.	Busia
4.	Embu
5.	Homa Bay
6.	Kakamega
7.	Kericho
8.	Kiambu
9.	Kirinyaga
10.	Kisumu
11.	Kisii
12.	Kitui
13.	Kwale
14.	Lamu

No.	Name of County
15.	Makueni
16.	Meru
17.	Migori
18.	Muranga
19.	Narok
20.	Nandi
21.	Nyamira
22.	Nyandarua
23.	Nyeri
24.	Taita Taveta
25.	Tharaka Nithi
26.	Uasin Gishu
27.	Vihiga
28.	West Pokot

KAGRC UPCOMING FACILITIES

GOAT ARTIFICIAL INSEMINATION CENTRE



Goat AI Centre

The construction of the Goats Artificial Insemination Centre located at Ndomba in Kirinyaga has been completed and semen production has commenced. The facility has genetically superior herd of dairy Goats that includes British Alpine, British Toggenburg, British Saanen, French Alpine, German Alpine and Anglo Nubian breed. The facility is the only one of its Kind in the region and it is hoped to have a tremendous impact in the productivity of dairy and meat goats that had been adversely affected by inbreeding.

EMBYO PRODUCTION AND TRANSFER FACILITY



ET Lab

The embryo production and transfer facility that includes the animal housing is under construction at Lower Kabete, Nairobi. The facility will have an animal unit housing the herd of high genetic merit brood cows for embryo production.

The adoption of embryo transfer breeding technology is hoped to increase the rate of genetic improvement of cattle and avail surplus superior stock for sale. The embryos will be produced by specially trained KAGRC staff and transferred to clients surrogates at an affordable cost. The ET Service to farmers begins by end July, 2023.

Supportive services offered to breeders and other stakeholders include;

- Supply of liquid nitrogen for semen preservation
- Sale of artificial insemination equipment and accessories
- Testing and certification of semen storage containers
- Offering refresher training on proper handling of bovine and caprine semen.



KENYA ANIMAL GENETIC RESOURCES CENTRE

For Superior Kenyan Animal Genetics



Progeny Group of KAGRC Sires

For Further Information Please contact:

The Managing Director
KAGRC
P. O. Box 23070-00604,
Lower Kabete
Nairobi, Kenya

Tel: 0737 540670
0728 899767
Email: info@kagrc.go.ke
Website: www.kagrc.go.ke

Or your nearest KAGRC Agent